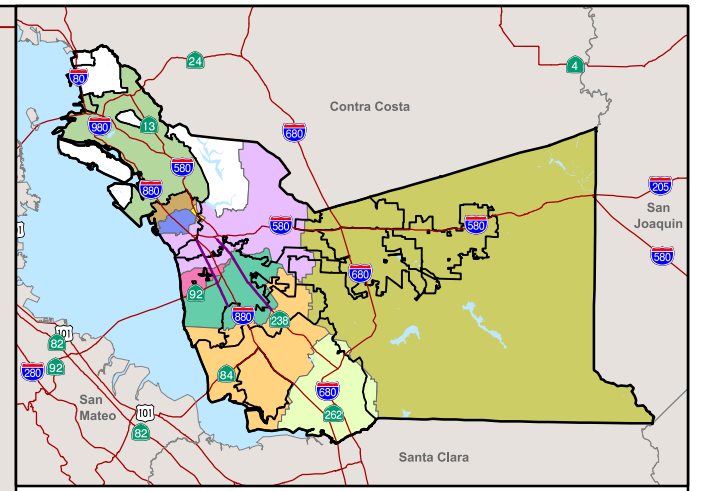
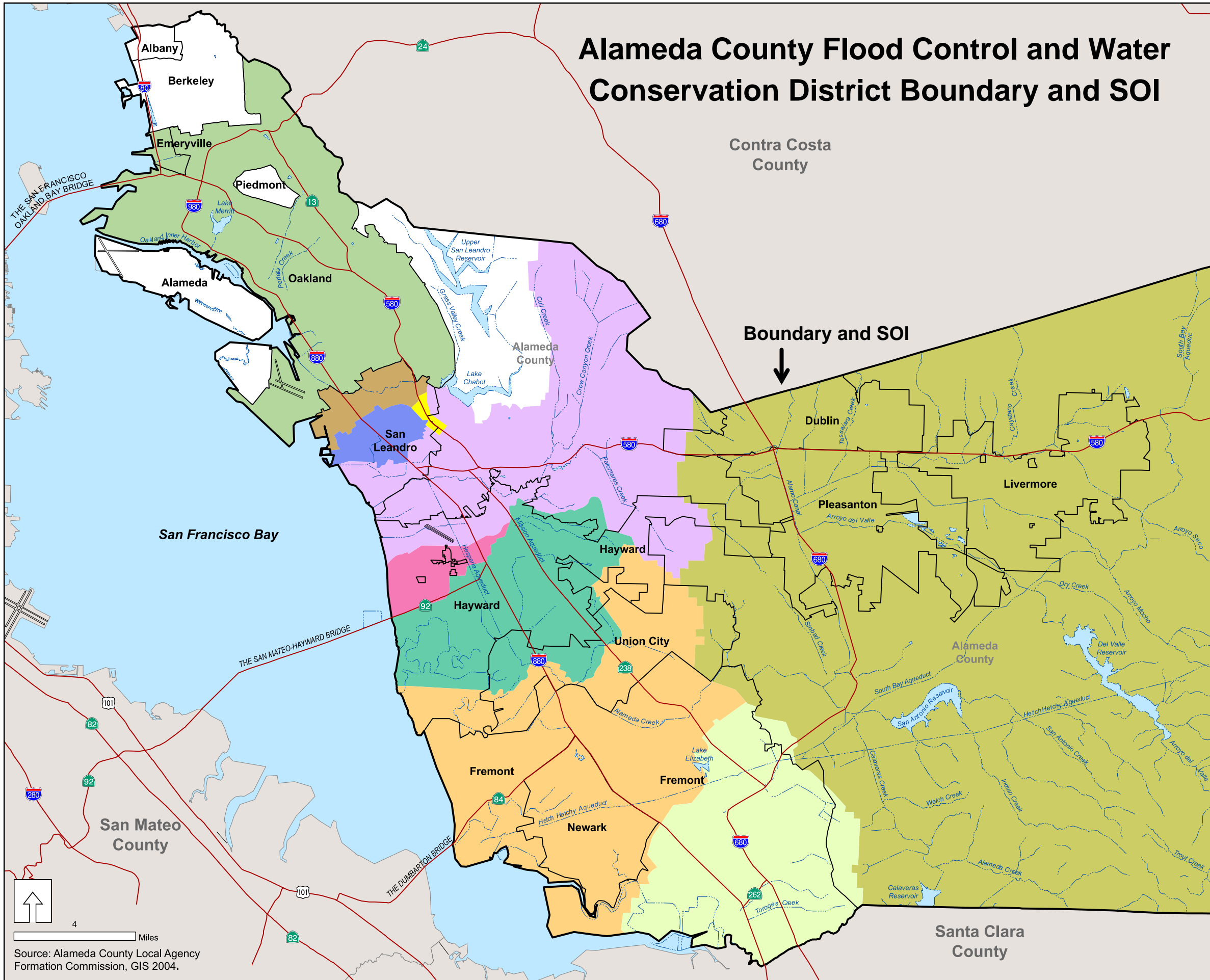


Alameda County Flood Control and Water Conservation District Boundary and SOI



Alameda County Reference Map

Legend

- Alameda County Flood Control and Water Conservation
- Incorporated Cities
- Hydrology
- Freeways

Flood Control Zones

- Zone 2
- Zone 2A
- Zone 3A
- Zone 4
- Zone 5
- Zone 6
- Zone 7
- Zone 9
- Zone 12
- Zone 13
- No Zone Designation

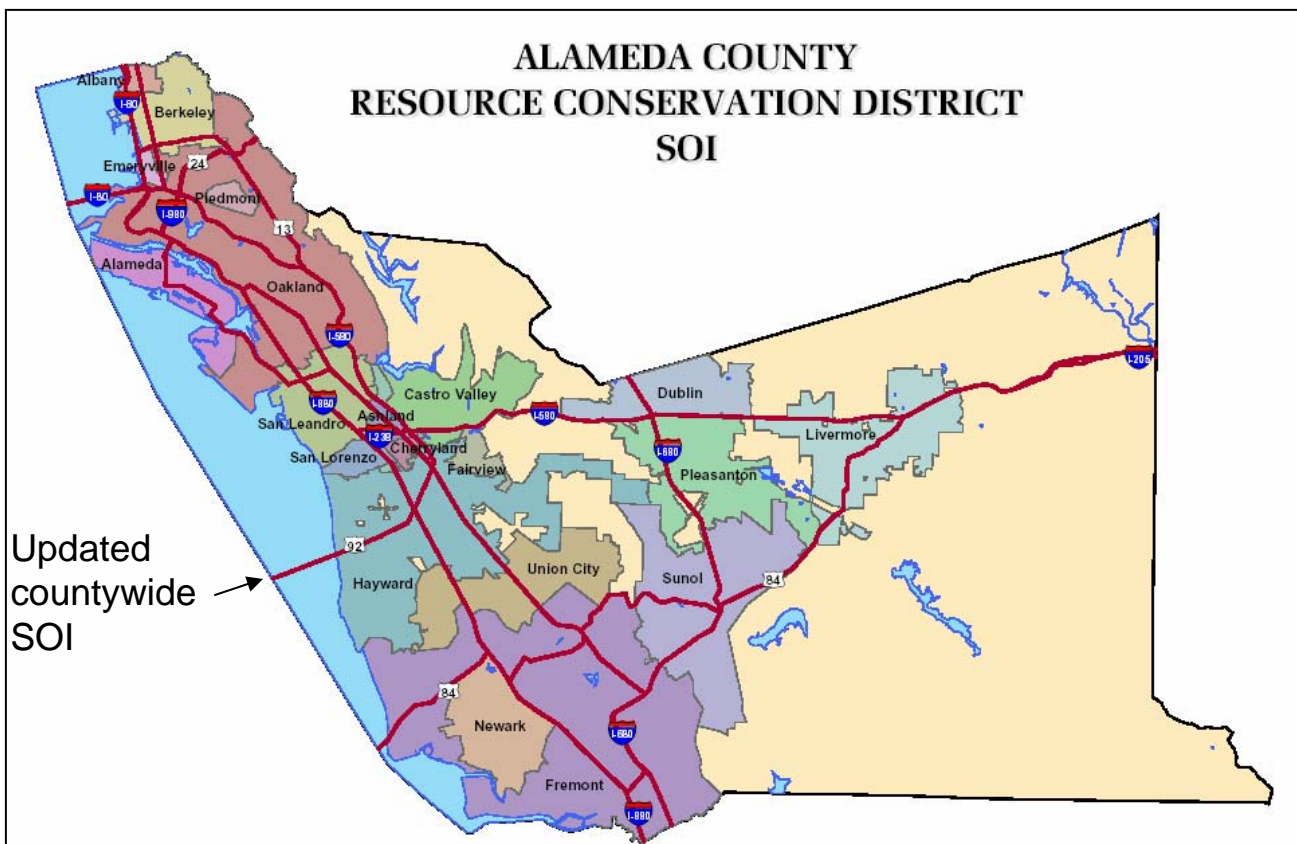
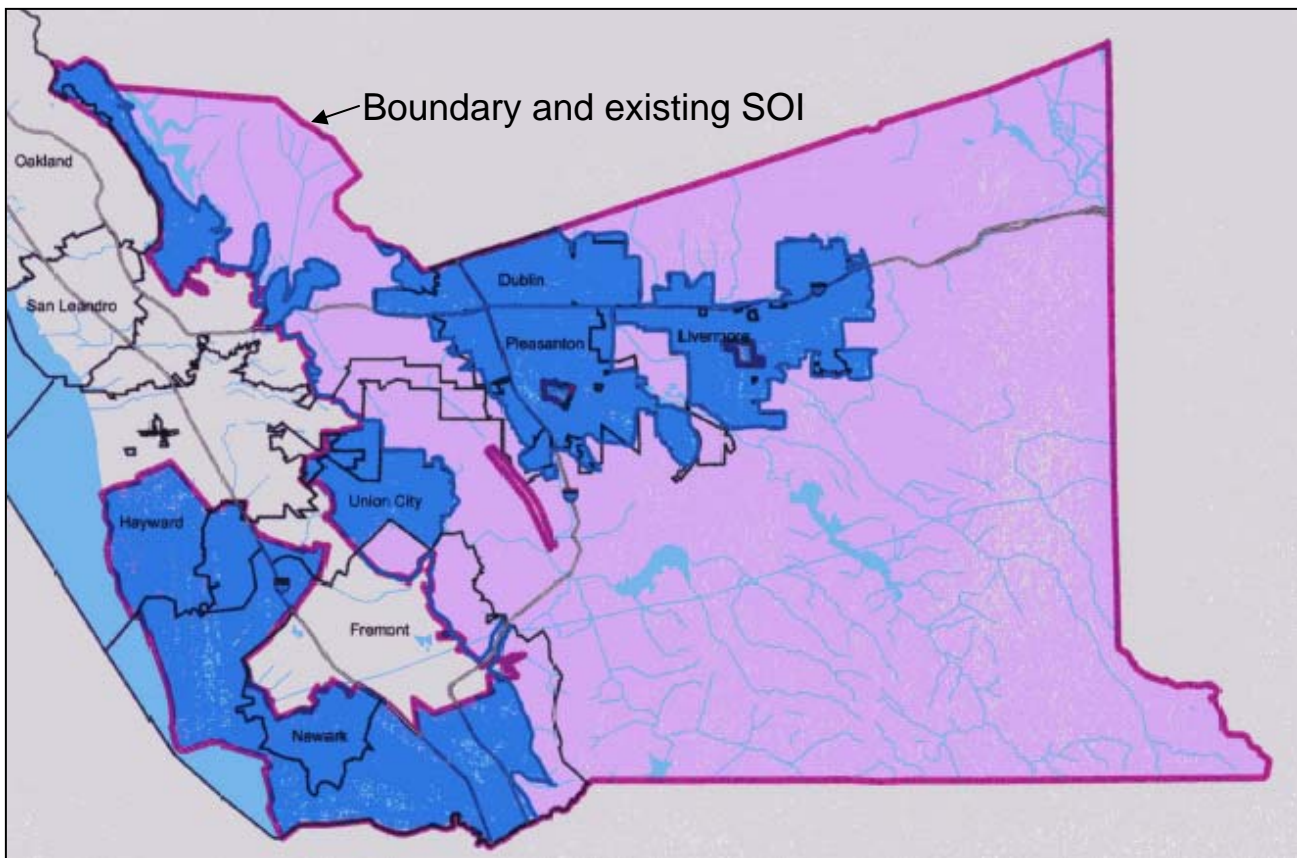
SOI Update

**Adopt countywide SOI
coterminous with
existing boundary**

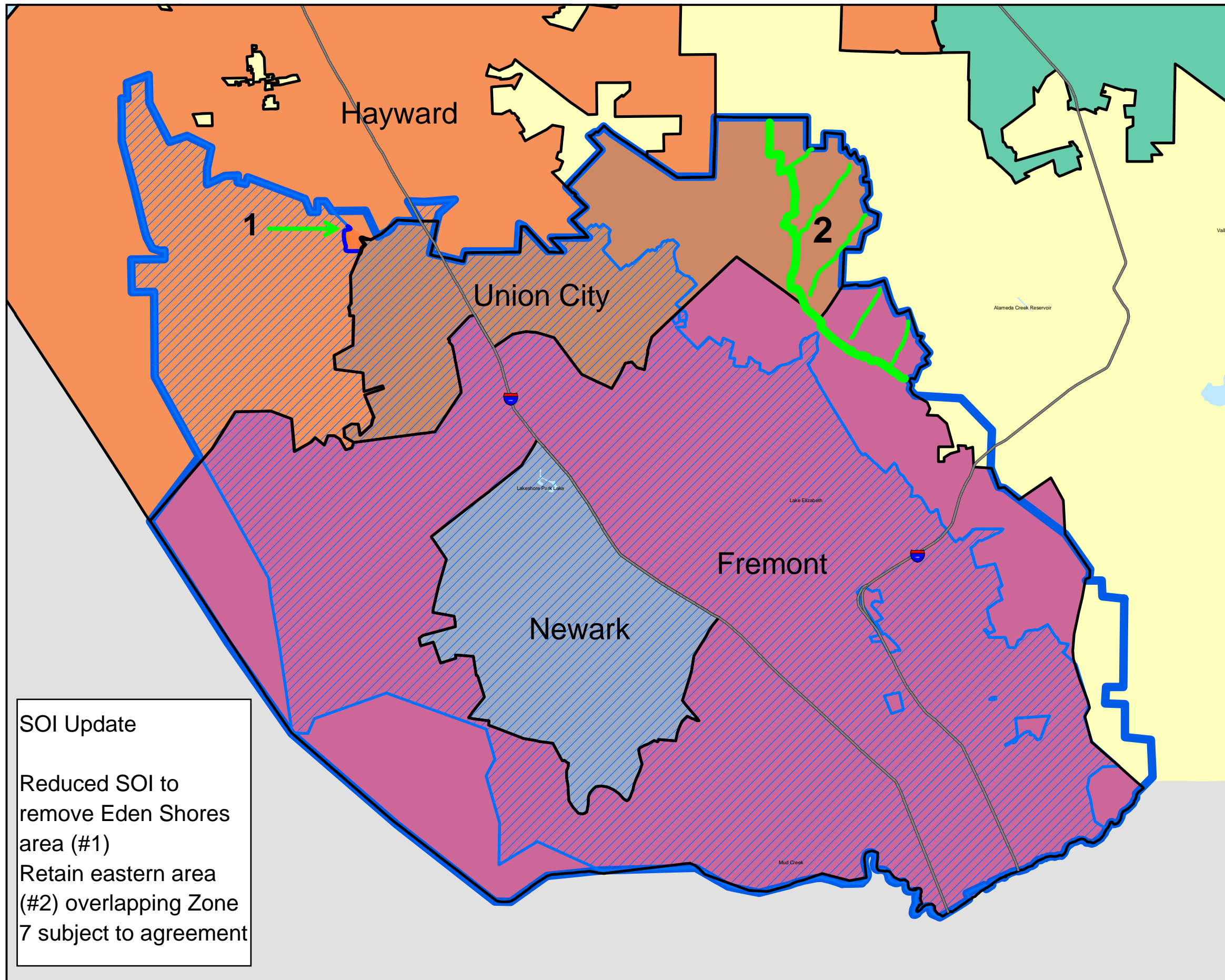
**Flood Control Services
Alameda County
MUNICIPAL SERVICE REVIEW**

4 Miles
Source: Alameda County Local Agency Formation Commission, GIS 2004.

Alameda County Resource Conservation District



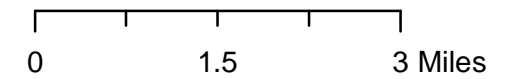
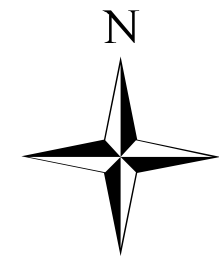
ALAMEDA COUNTY WATER DISTRICT



SOI Update

Reduced SOI to remove Eden Shores area (#1)

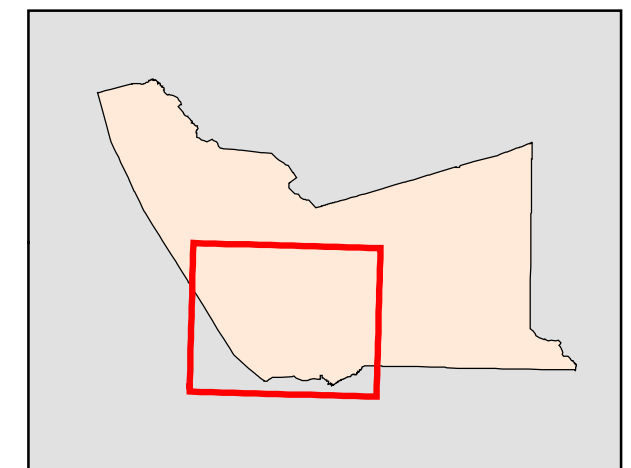
Retain eastern area (#2) overlapping Zone 7 subject to agreement



Legend

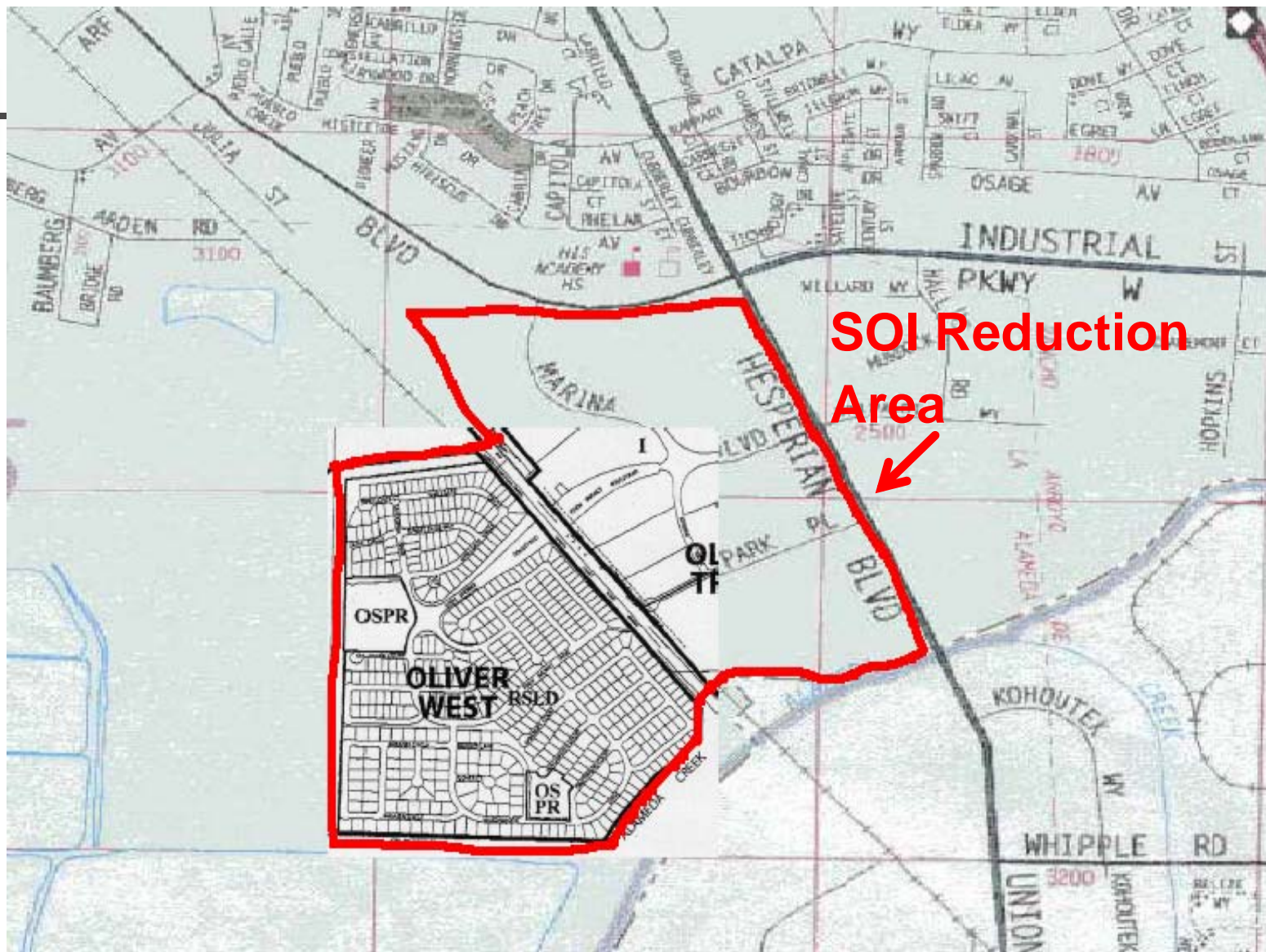
- Interstates
- ACWD_Island_Outline
- Alameda County Water District
- Alameda County Water SOI
- Hydrology
- Alameda Unincorporated

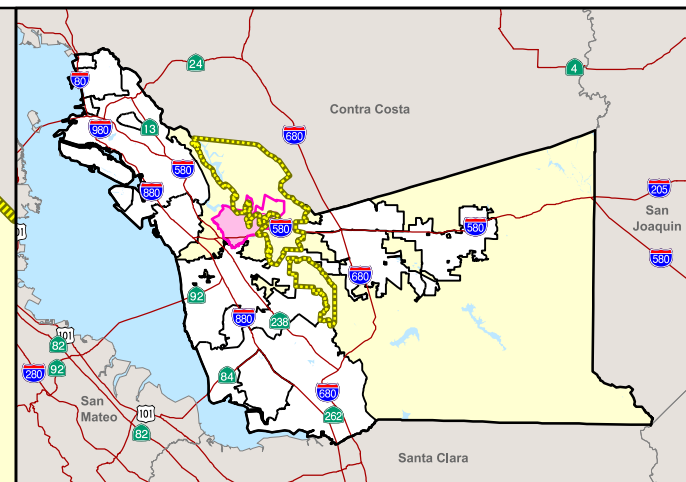
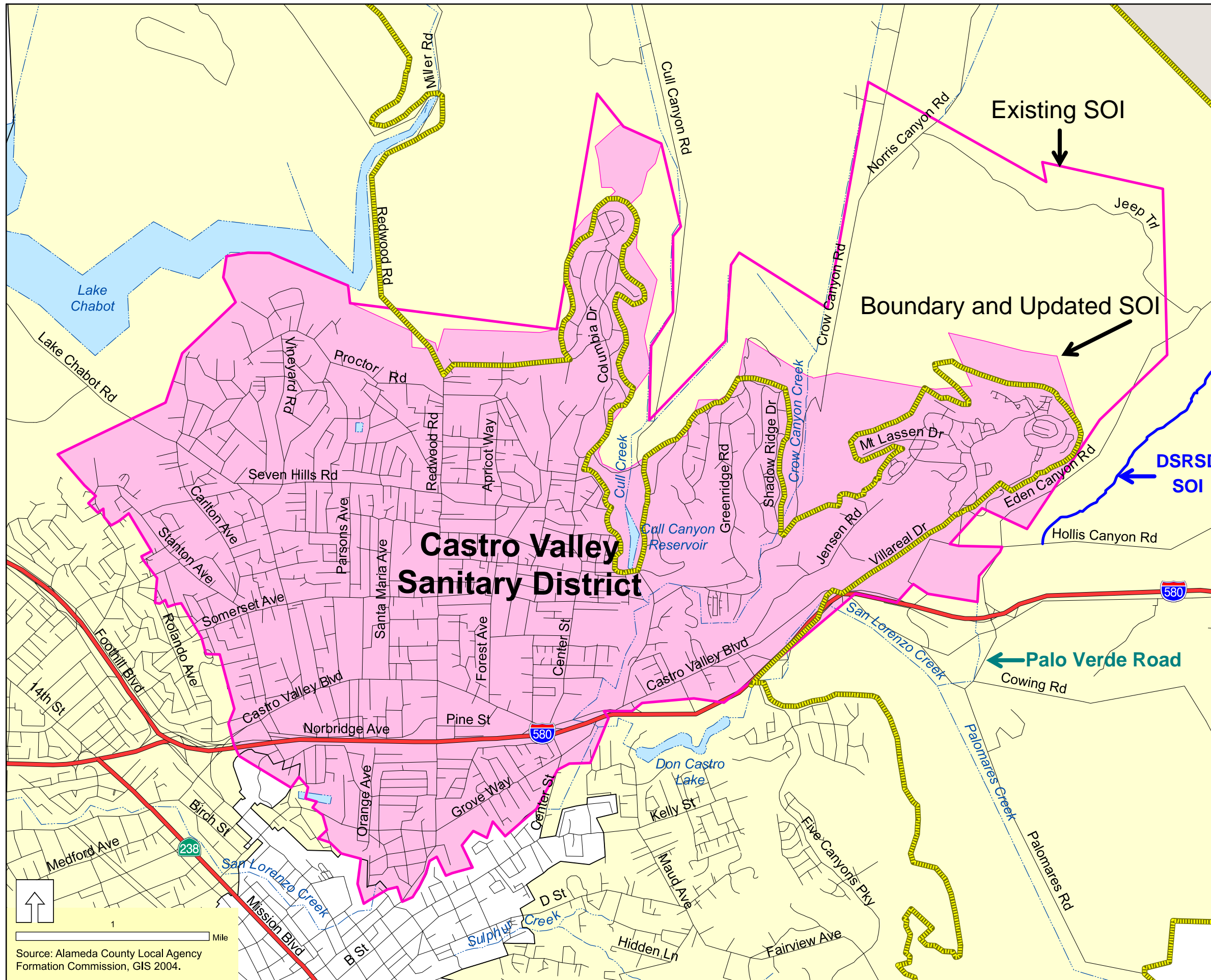
Alameda County Reference Map



ACWD SOI Update

Eden Shores SOI Reduction Area (#1) Detail





Alameda County Reference Map

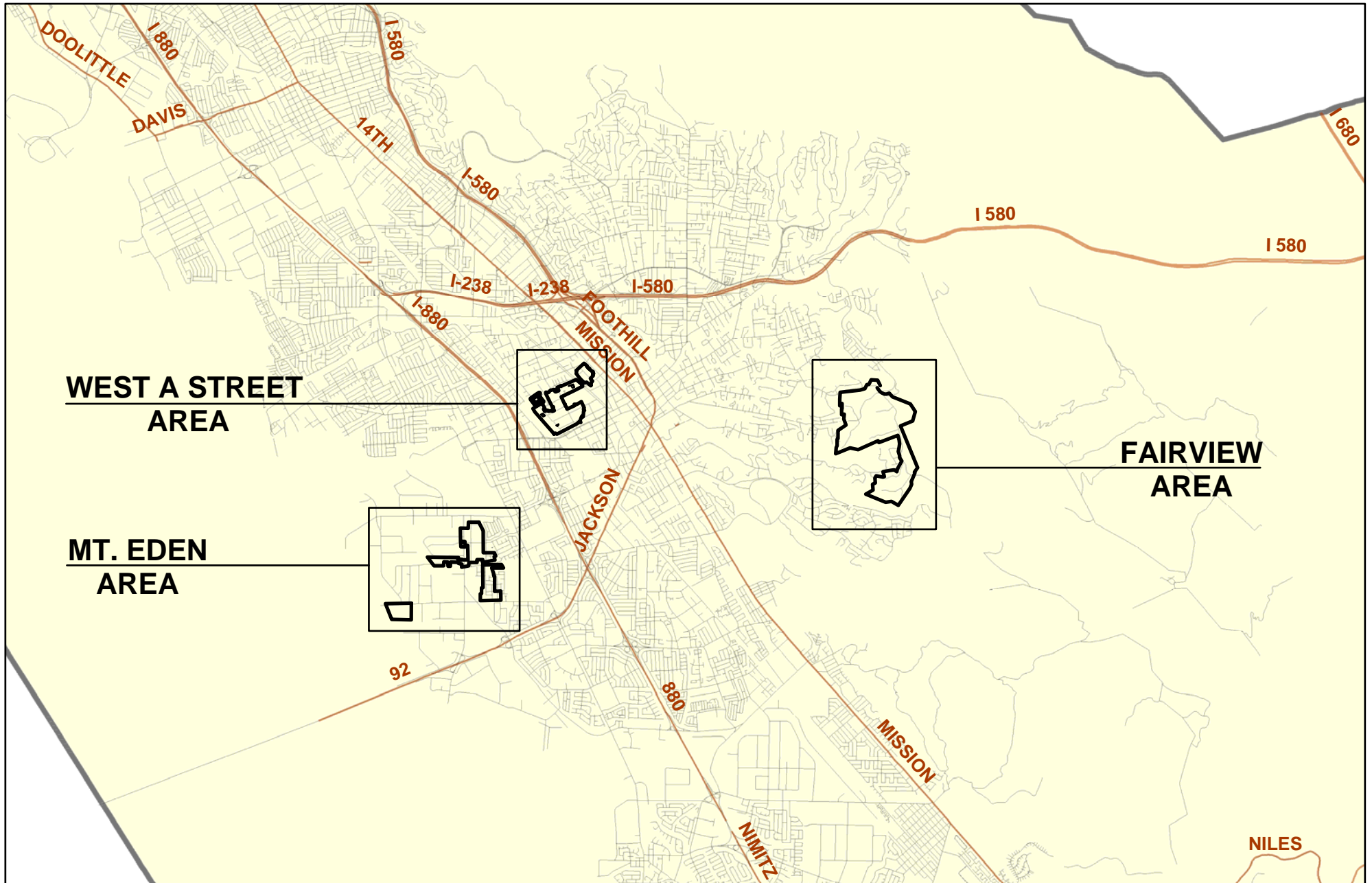
- Legend**
- Incorporated Cities
 - Castro Valley Sanitary District (CVSD)
 - CVSD Sphere of Influence
 - Western Measure D Area
 - Unincorporated Areas
 - Hydrology
 - Freeways

Castro Valley Sanitary District SOI Update

Update SOI to be coterminous with the CVSD boundary

**Castro Valley Sanitary District and Sphere of Influence
Alameda County
MUNICIPAL SERVICE REVIEW**

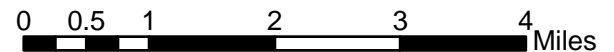
Source: Alameda County Local Agency Formation Commission, GIS 2004.



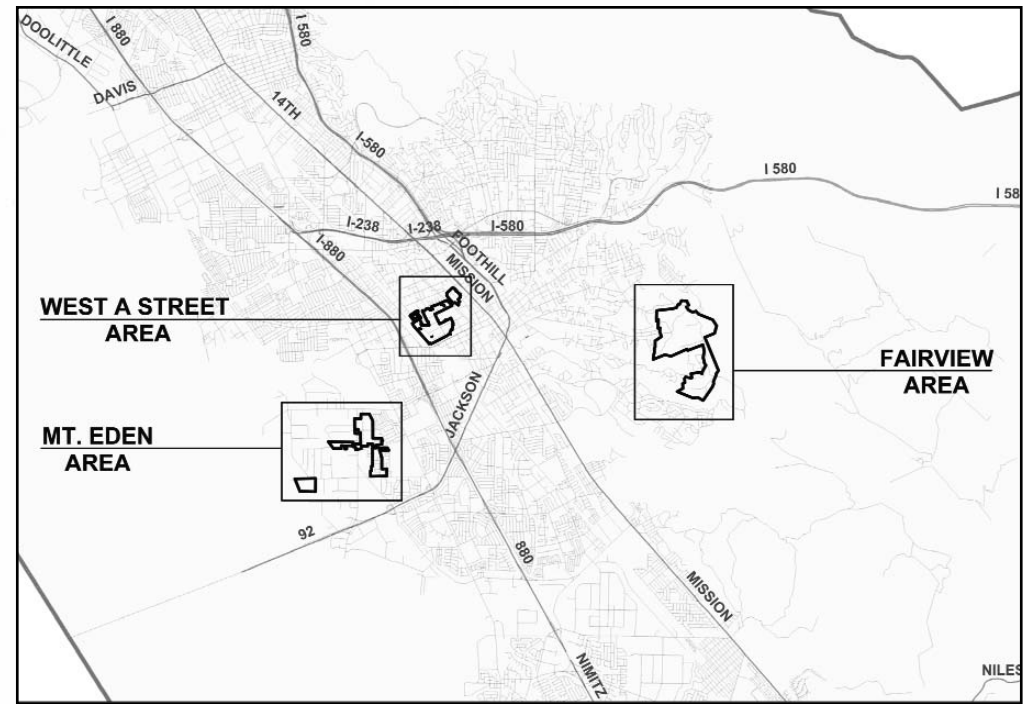
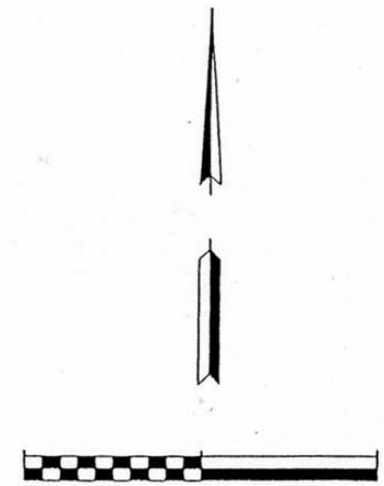
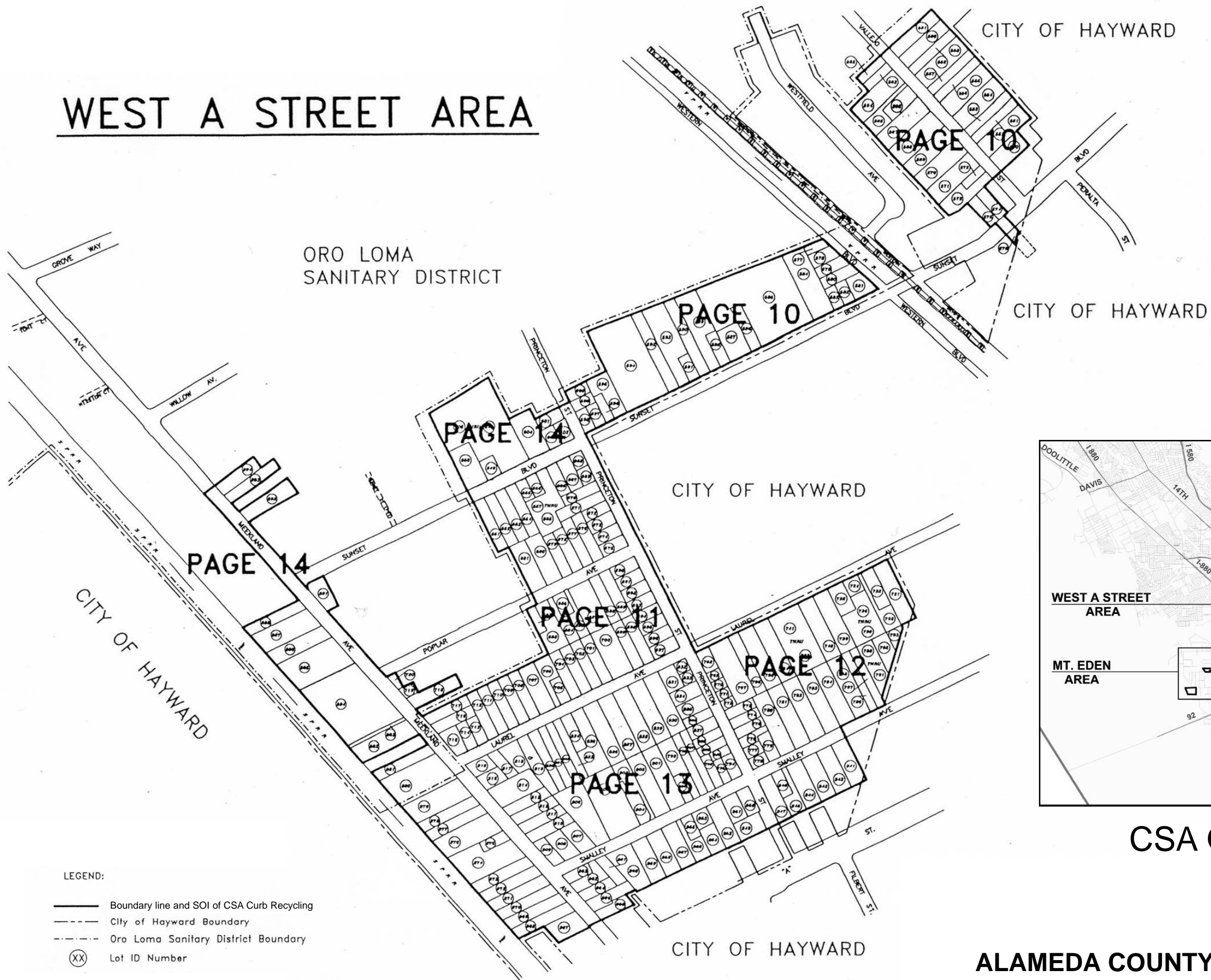
ALAMEDA COUNTY CURBSIDE RECYCLING CSA BOUNDARY AND SOI

WEST A STREET / MT. EDEN / FAIRVIEW AREAS

Alameda County CDA - Planning Department



WEST A STREET AREA

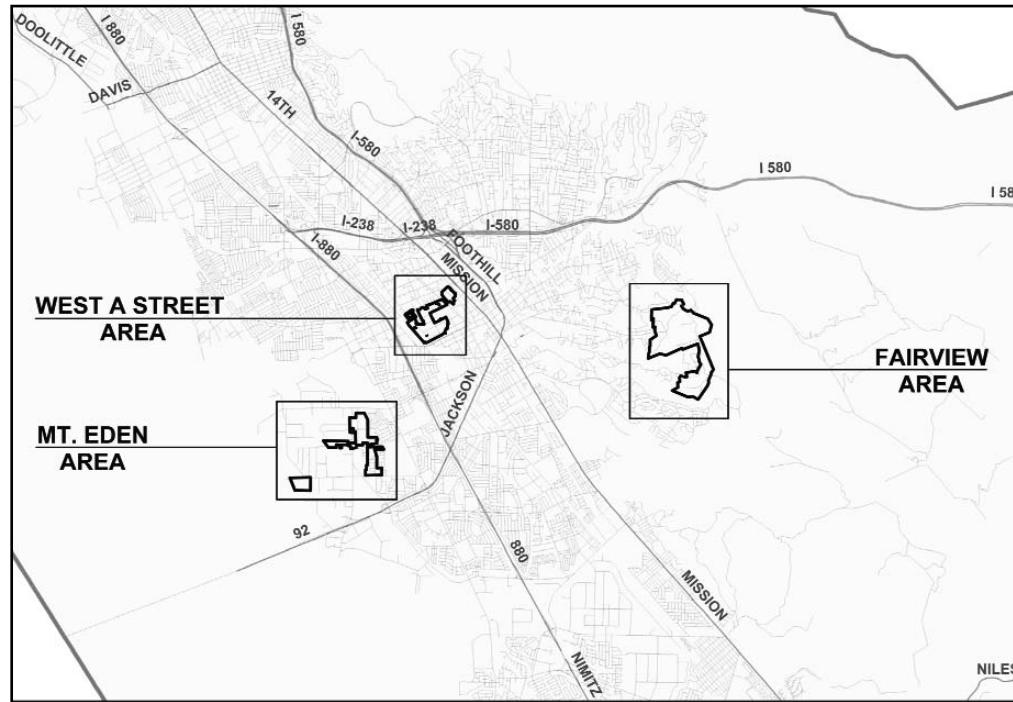


CSA OVERVIEW MAP

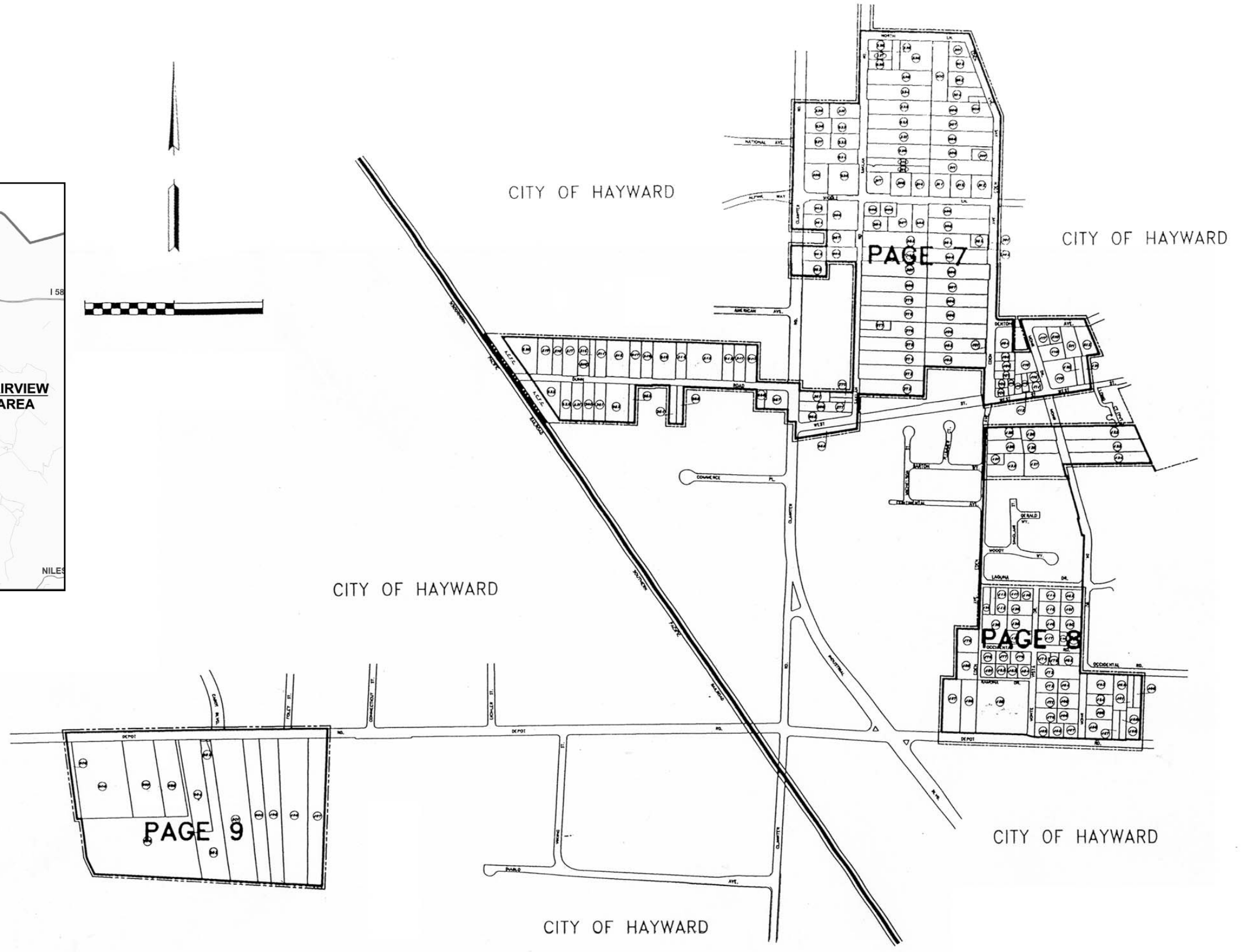
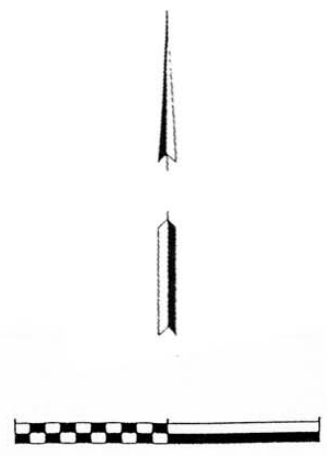


- LEGEND:
- Boundary line and SOI of CSA Curbside Recycling
 - - - City of Hayward Boundary
 - - - Oro Loma Sanitary District Boundary
 - (XX) Lot ID Number

ALAMEDA COUNTY CURBSIDE RECYCLING CSA

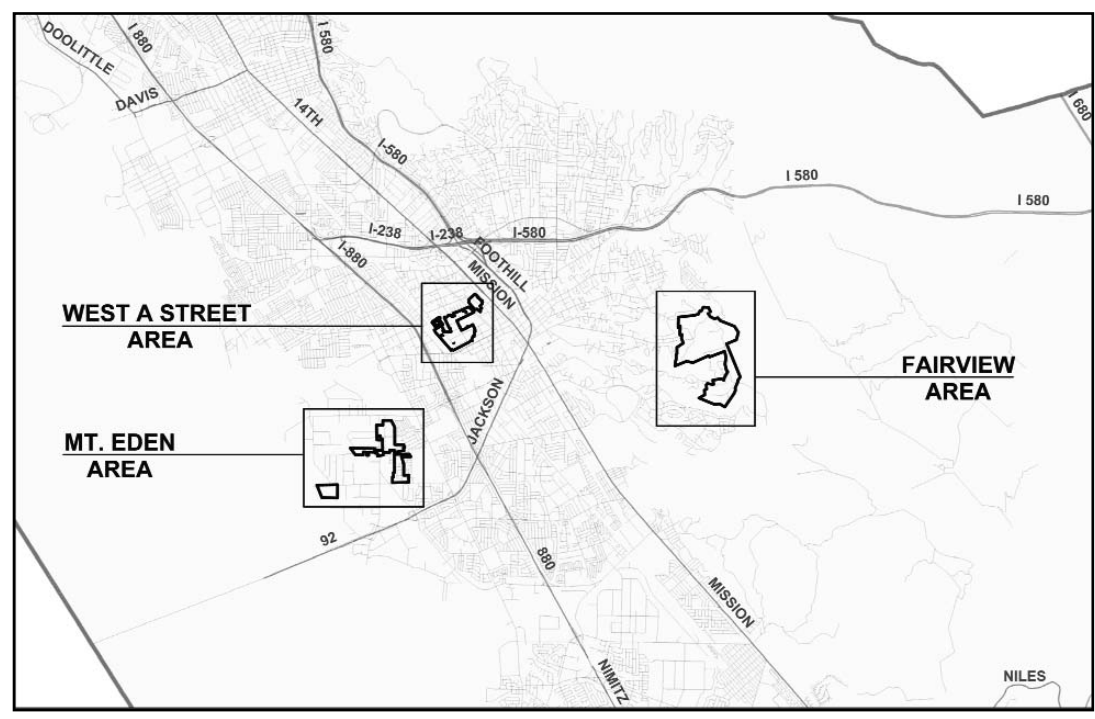
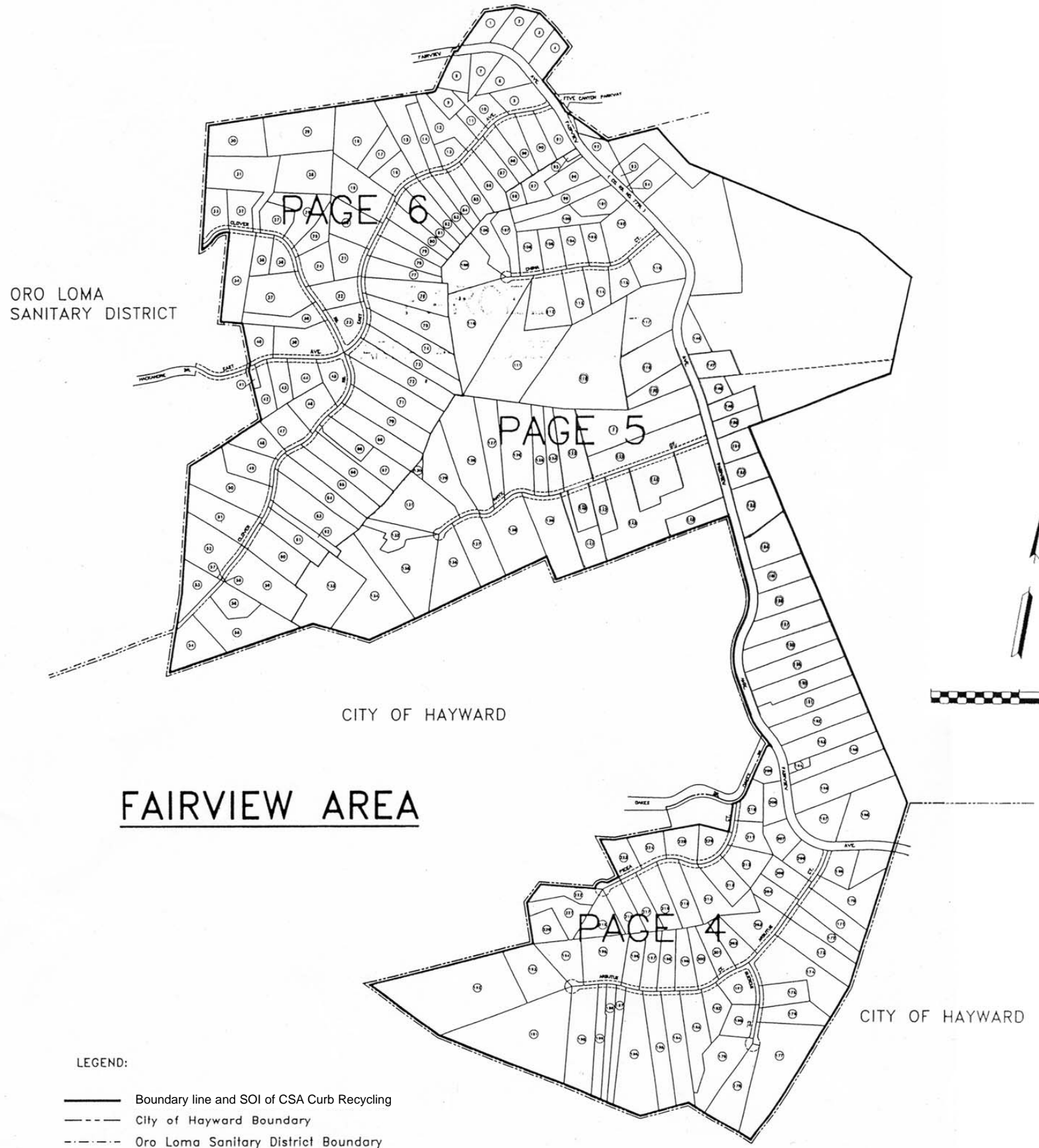


↑ **CSA OVERVIEW MAP**



- LEGEND:**
- Boundary line and SOI of CSA Curb Recycling
 - - - City of Hayward Boundary
 - (XX) Lot ID Number

MT. EDEN AREA
ALAMEDA COUNTY CURBSIDE RECYCLING CSA



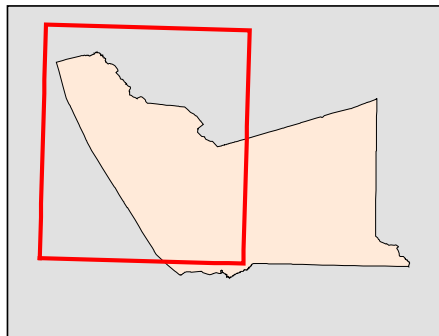
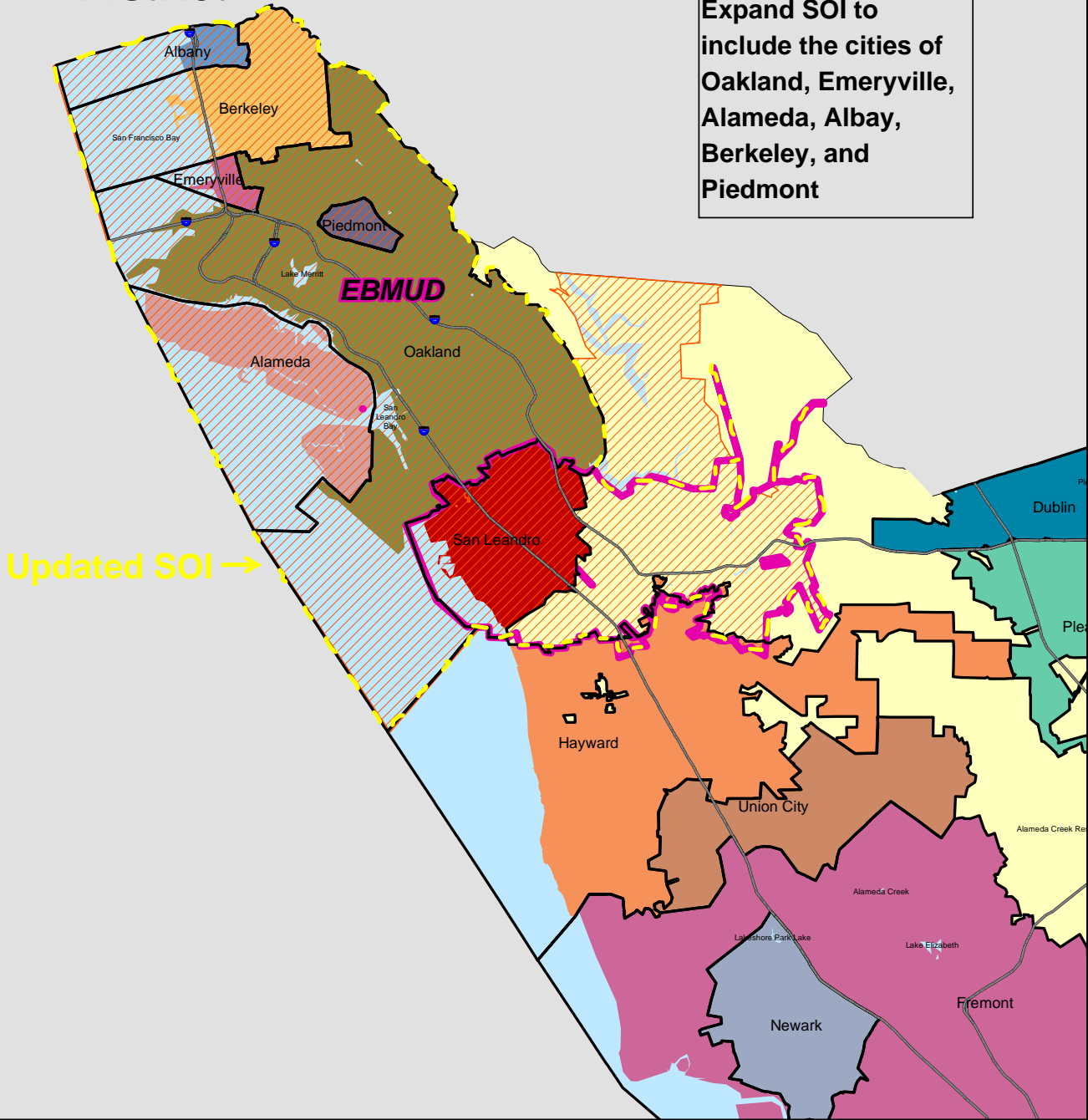
CSA OVERVIEW MAP ↑

ALAMEDA COUNTY CURBSIDE RECYCLING CSA





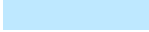

East Bay Municipal Utility District

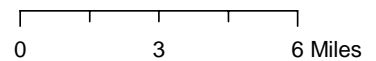
SOI Update

Expand SOI to include the cities of Oakland, Emeryville, Alameda, Albany, Berkeley, and Piedmont

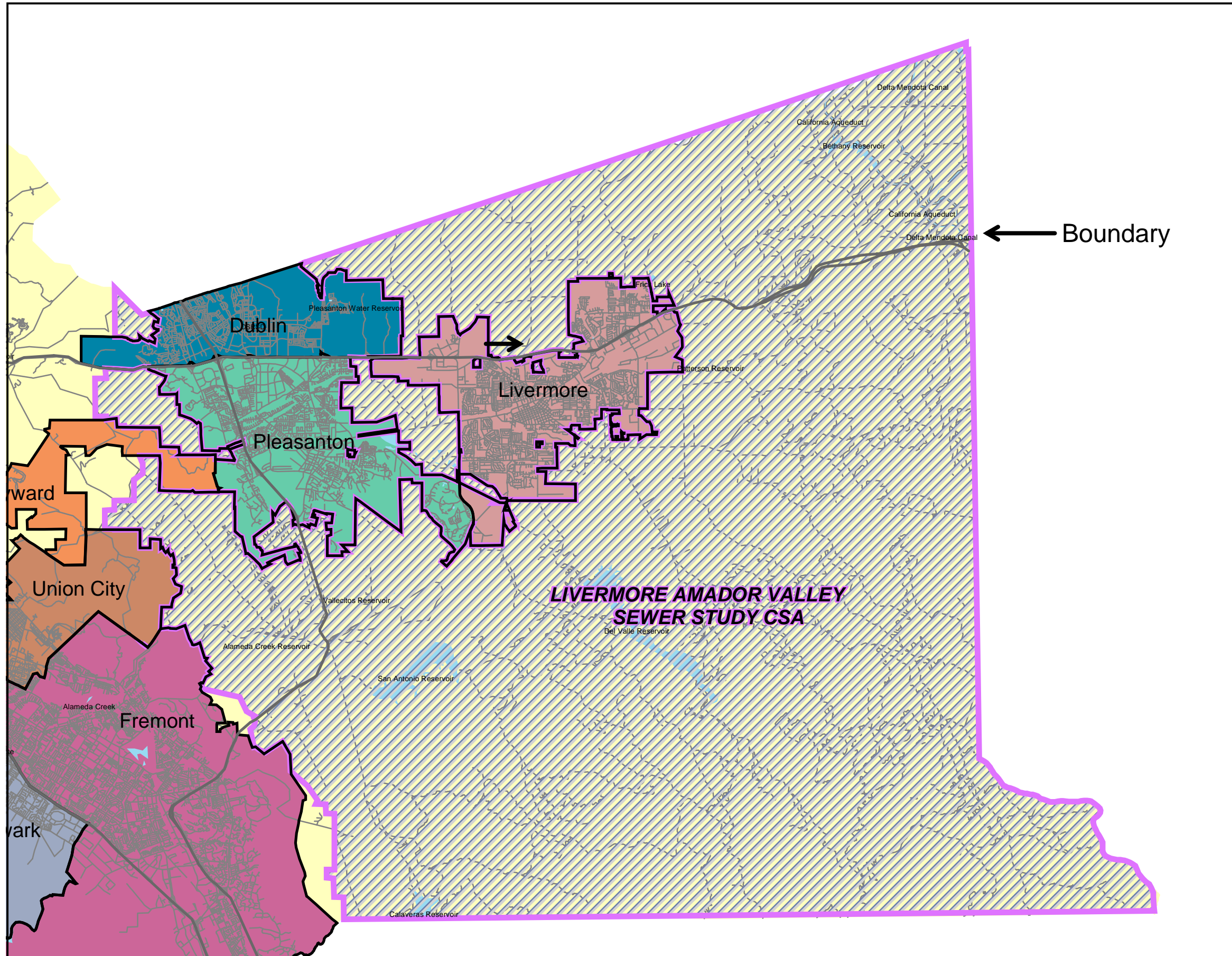


Legend

-  Interstates
-  EBMUD boundary
-  EBMUD existing SOI
-  City Limits
-  Hydrology
-  Alameda Unicorporated

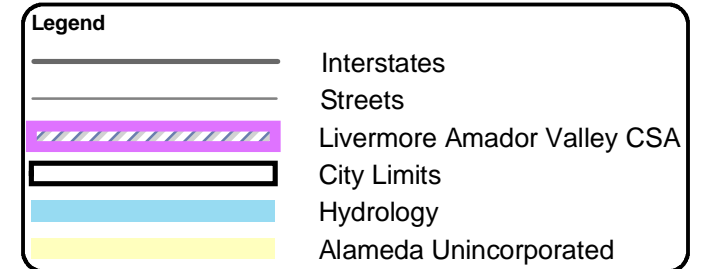
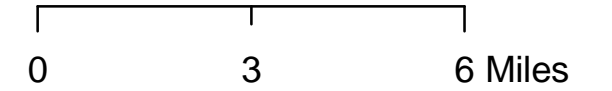


LIVERMORE AMADOR VALLEY SEWER STUDY CSA

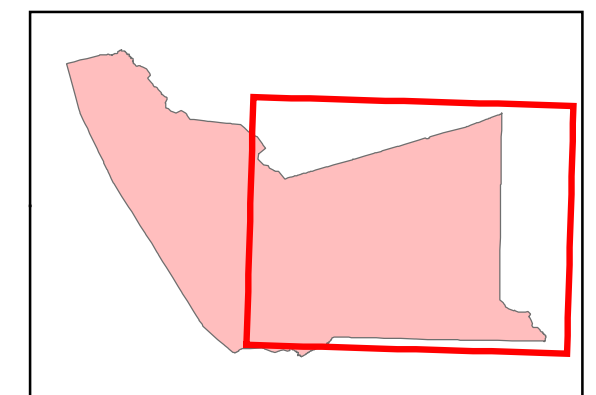


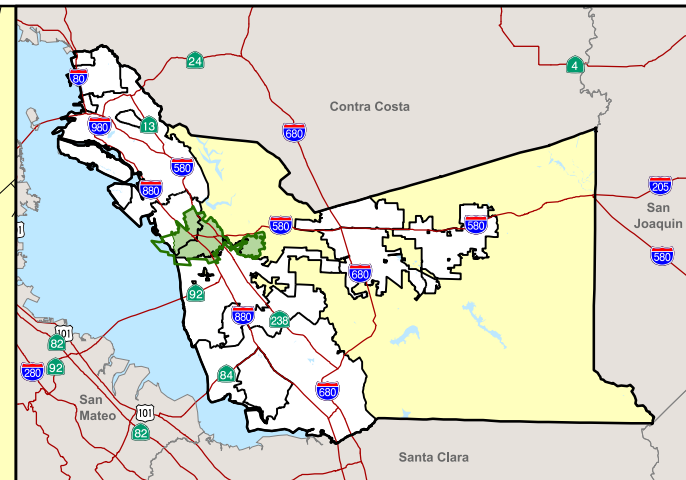
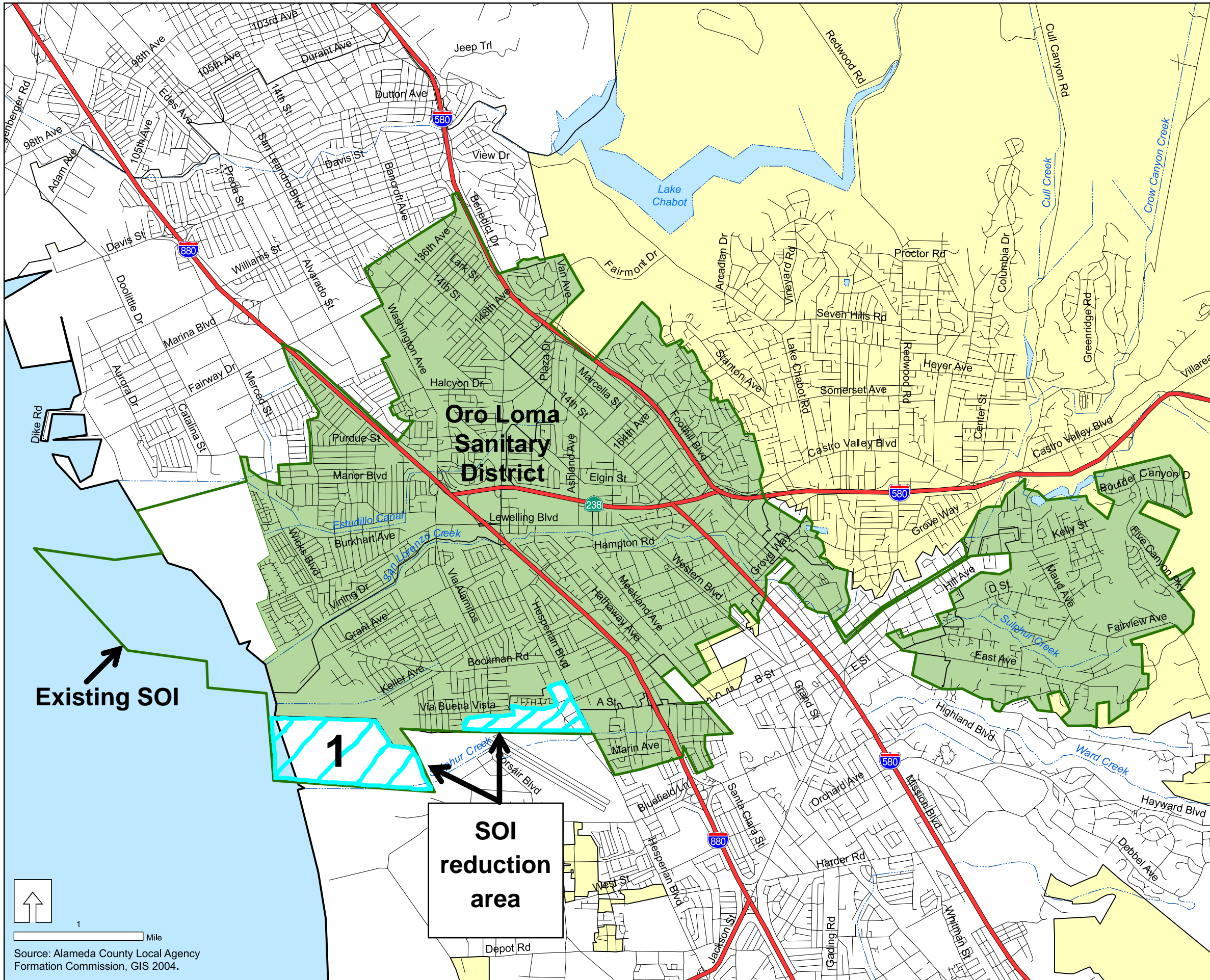
SOI Update

Adopt a zero SOI



Alameda County Reference Map





Alameda County Reference Map

- Legend**
- Alameda County Flood Control and Water Conservation
 - Incorporated Cities
 - Oro Loma Service District (OLSD)
 - OLSD Sphere of Influence
 - Unincorporated Areas
 - Hydrology
 - Freeways

Oro Loma Sanitary District (OLSD) SOI Update

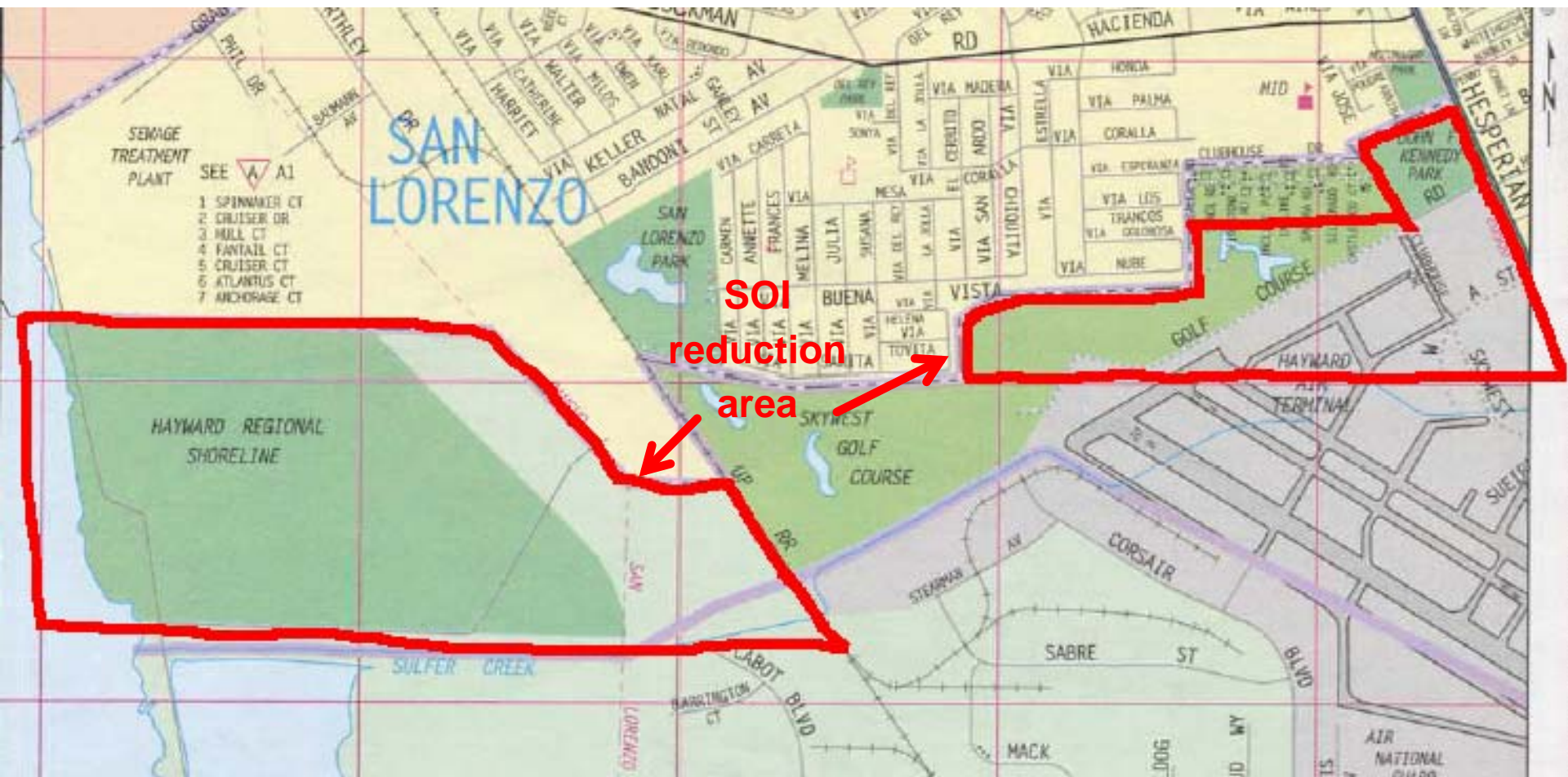
Reduce SOI to exclude Skywest area (#1) in the City of Hayward

Oro Loma Service District and Sphere of Influence Alameda County MUNICIPAL SERVICE REVIEW

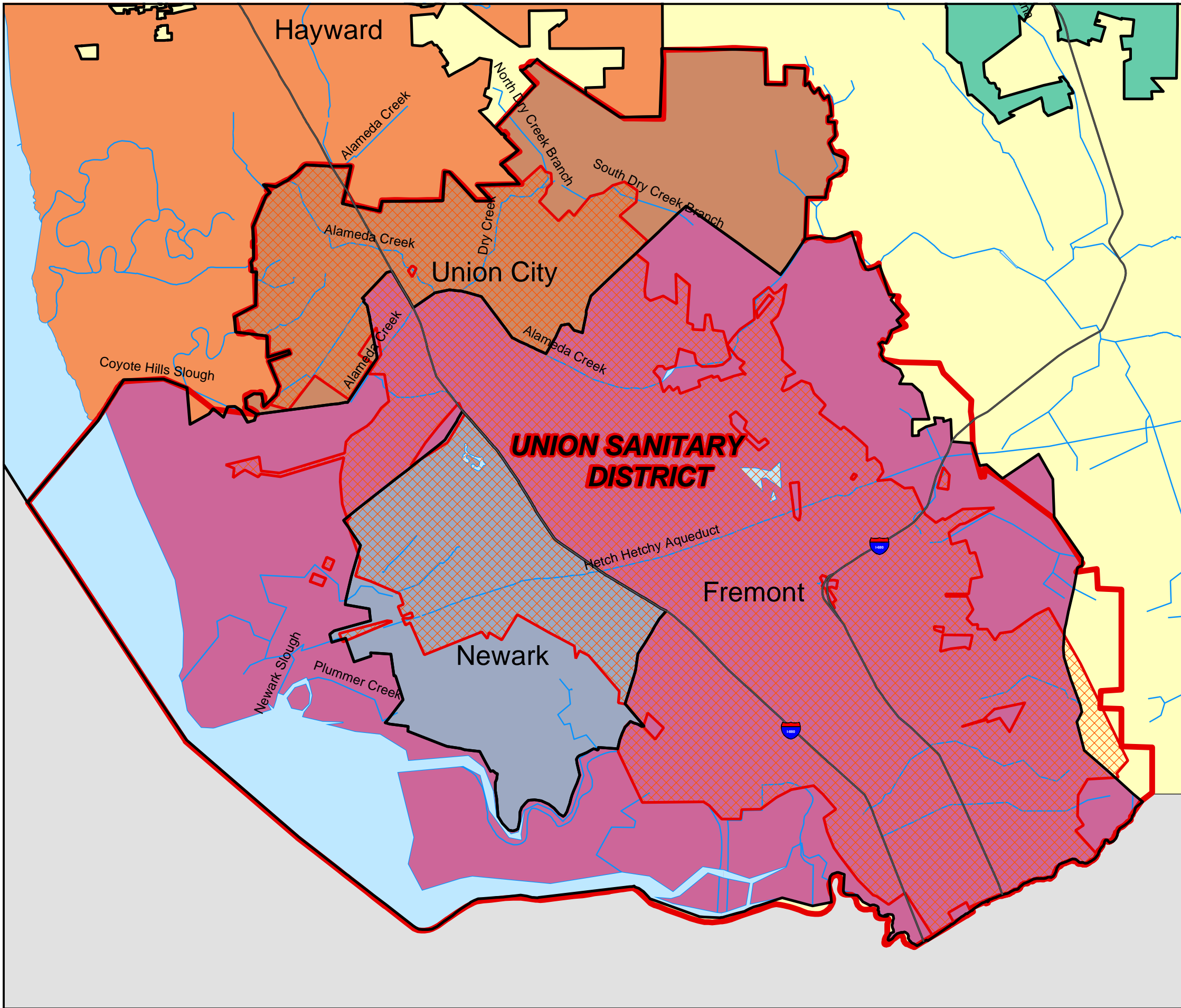
1 Mile
 Source: Alameda County Local Agency Formation Commission, GIS 2004.

OLSD SOI Reduction Area Detail

Skywest area (#1) within City of Hayward







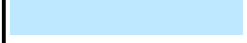

UNION SANITARY DISTRICT



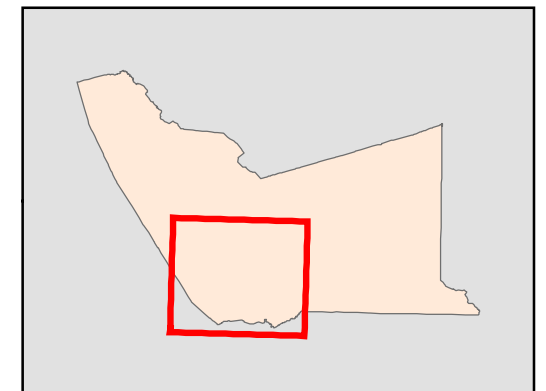
Union Sanitary District
SOI Update

Retain Existing SOI

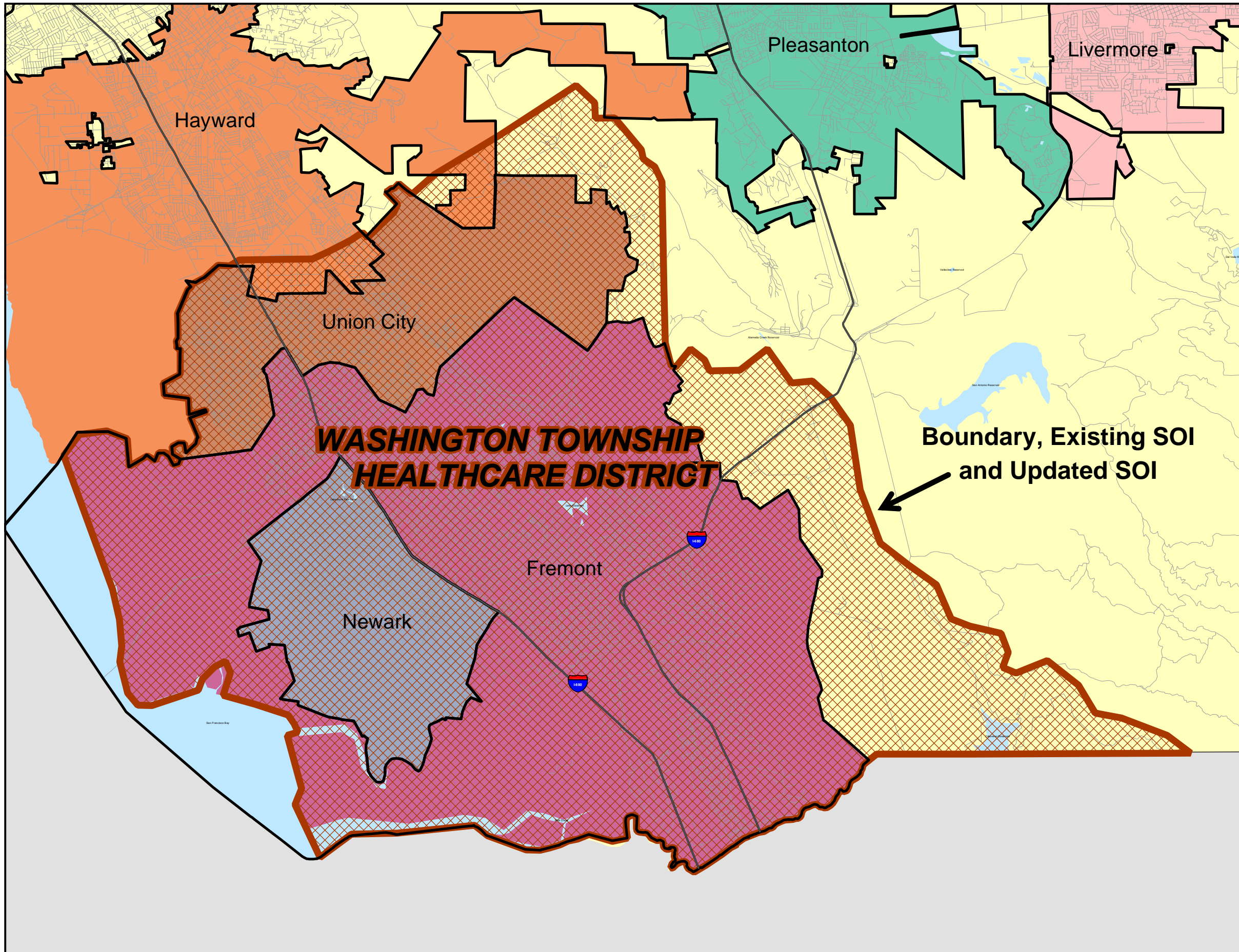
Legend

-  Interstates
-  Union Sanitary District
-  Union Sanitary SOI
-  City Limits
-  Hydrology
-  Alameda Unincorporated

Alameda County Reference Map



WASHINGTON TOWNSHIP HEALTHCARE DISTRICT



SOI Update

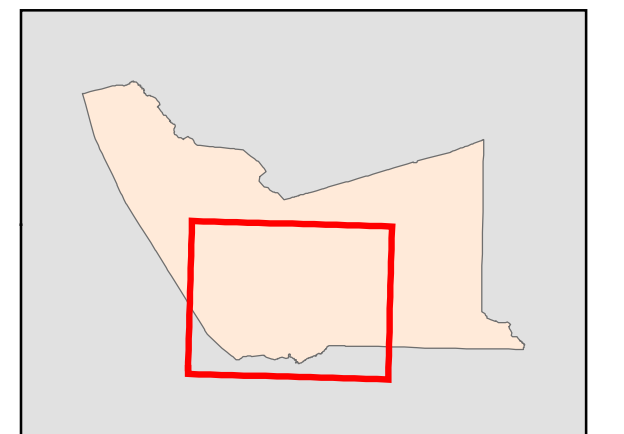
Retain Existing SOI coterminous with boundary

Legend

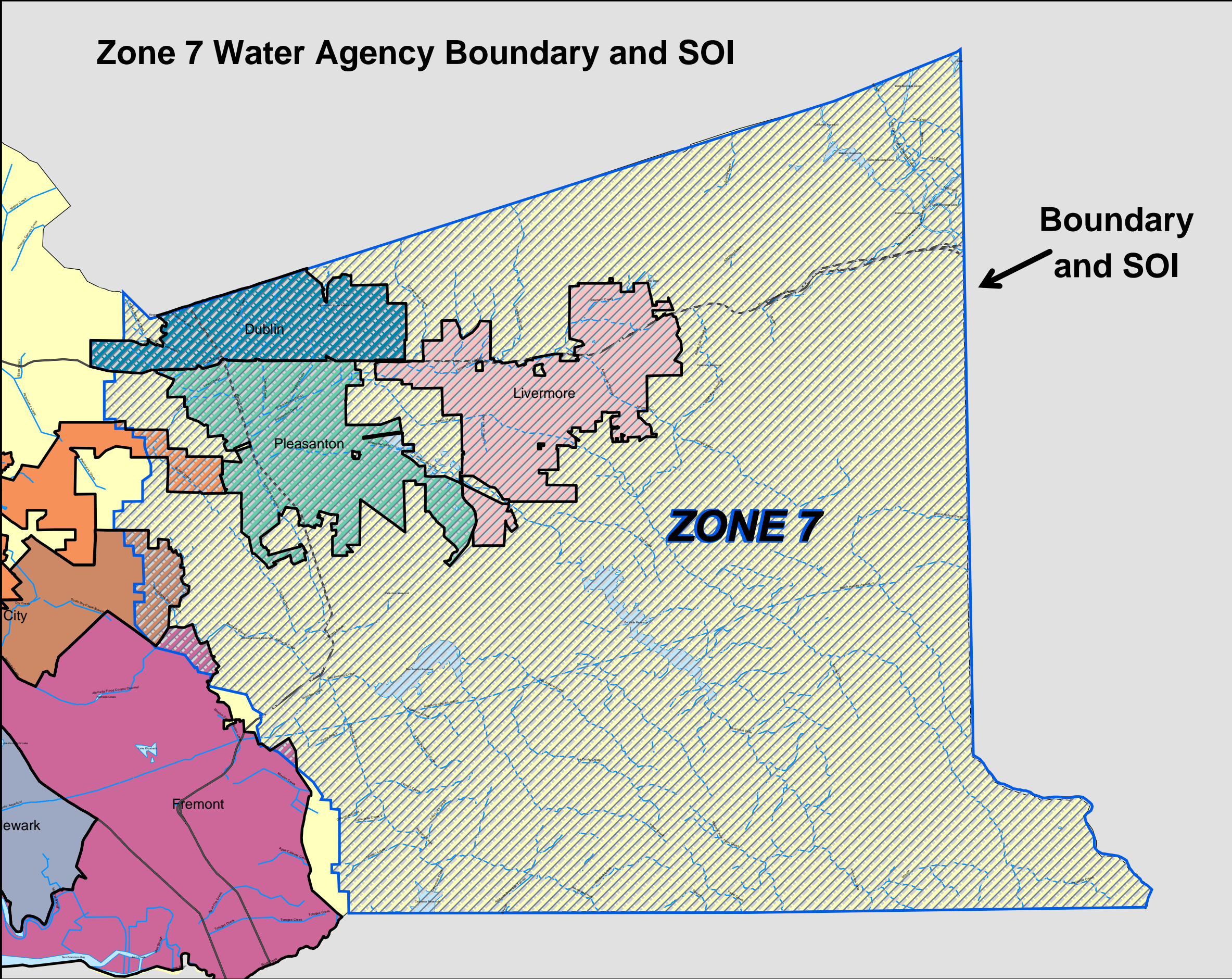
- Streets
- Interstates
- City Limits
- Washington Township Healthcare
- Hydrology
- Alameda Unincorporated

Boundary, Existing SOI and Updated SOI

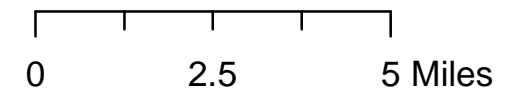
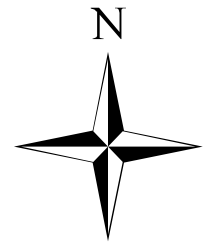
Alameda County Reference Map



Zone 7 Water Agency Boundary and SOI



Boundary and SOI



Legend

- Interstates
- Zone 7
- City Limits
- Hydrology
- Alameda Unincorporated

SOI Adoption

Adopt a coterminous SOI