



**ALAMEDA COUNTY  
HEALTH CARE SERVICES AGENCY**

**ALAMEDA COUNTY  
HEALTH CARE SYSTEM OVERVIEW**

**TO THE LOCAL AGENCY FORMATION  
COMMISSION (LAFCO)**

**September 8, 2016**

**Rebecca Gebhart, Interim Agency Director  
Health Care Services Agency**



# ALAMEDA COUNTY HEALTH CARE SERVICES AGENCY

## OVERVIEW

- Alameda County Health Care Services Agency
- Health care definitions
- Components of a health system
- Alameda County's system
- Payer mix in Alameda County
- What is the safety net?
- What are the issues facing the safety net?



# ALAMEDA COUNTY HEALTH CARE SERVICES AGENCY

## VISION

**Health Equity** through the goals of  
Healthy **People**, Healthy **Places**, Healthy **Policies** and  
Healthy **Systems**

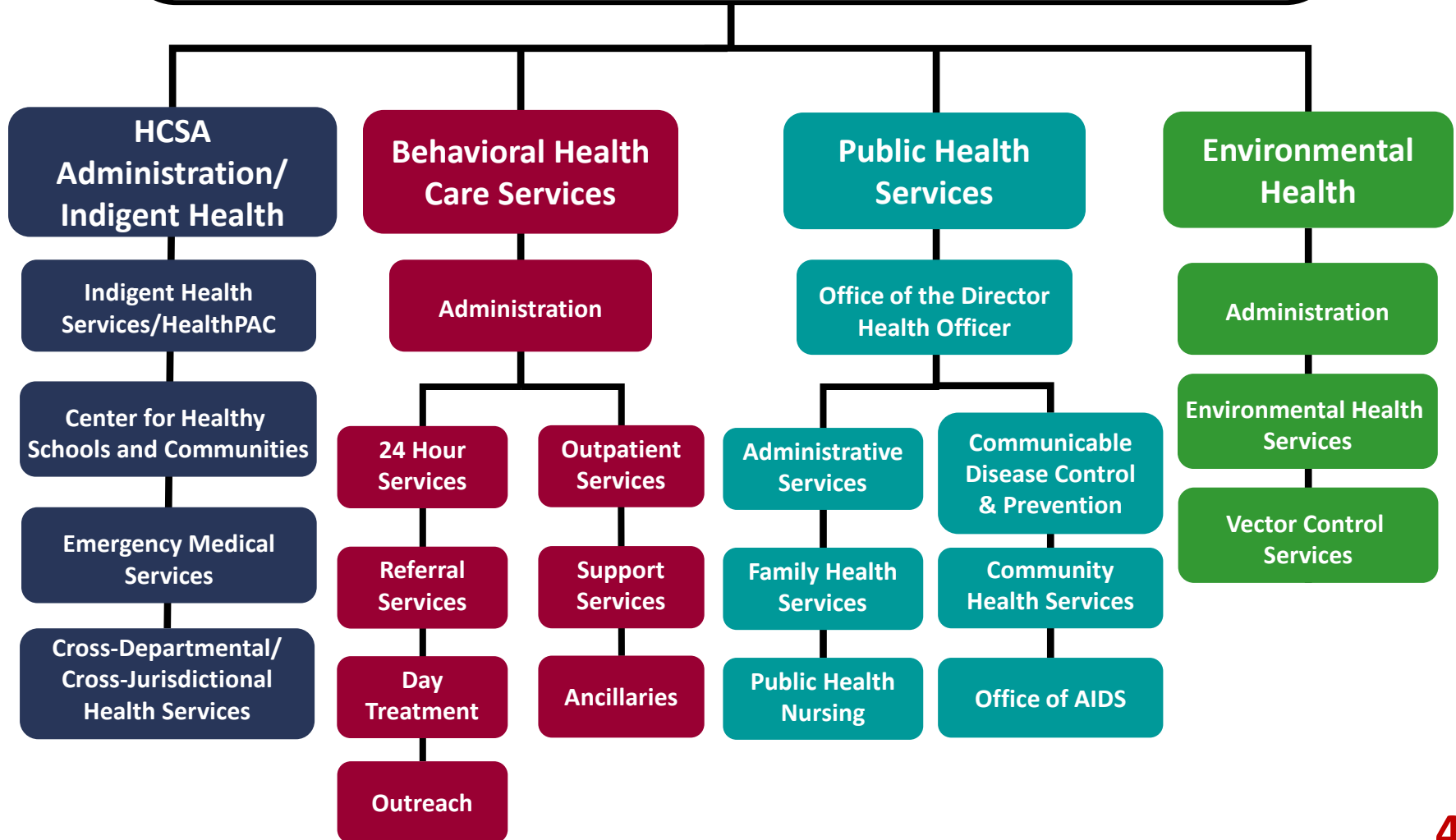
## MISSION

Provide fully integrated health care services through a comprehensive network of public and private partnerships that ensures optimal health and well-being and respects the diversity of all residents



# ALAMEDA COUNTY HEALTH CARE SERVICES AGENCY

Office of the Director ♦ Finance & Administration ♦ Medical Director  
Human Resources ♦ Fund Development ♦ Policy ♦ Evaluation



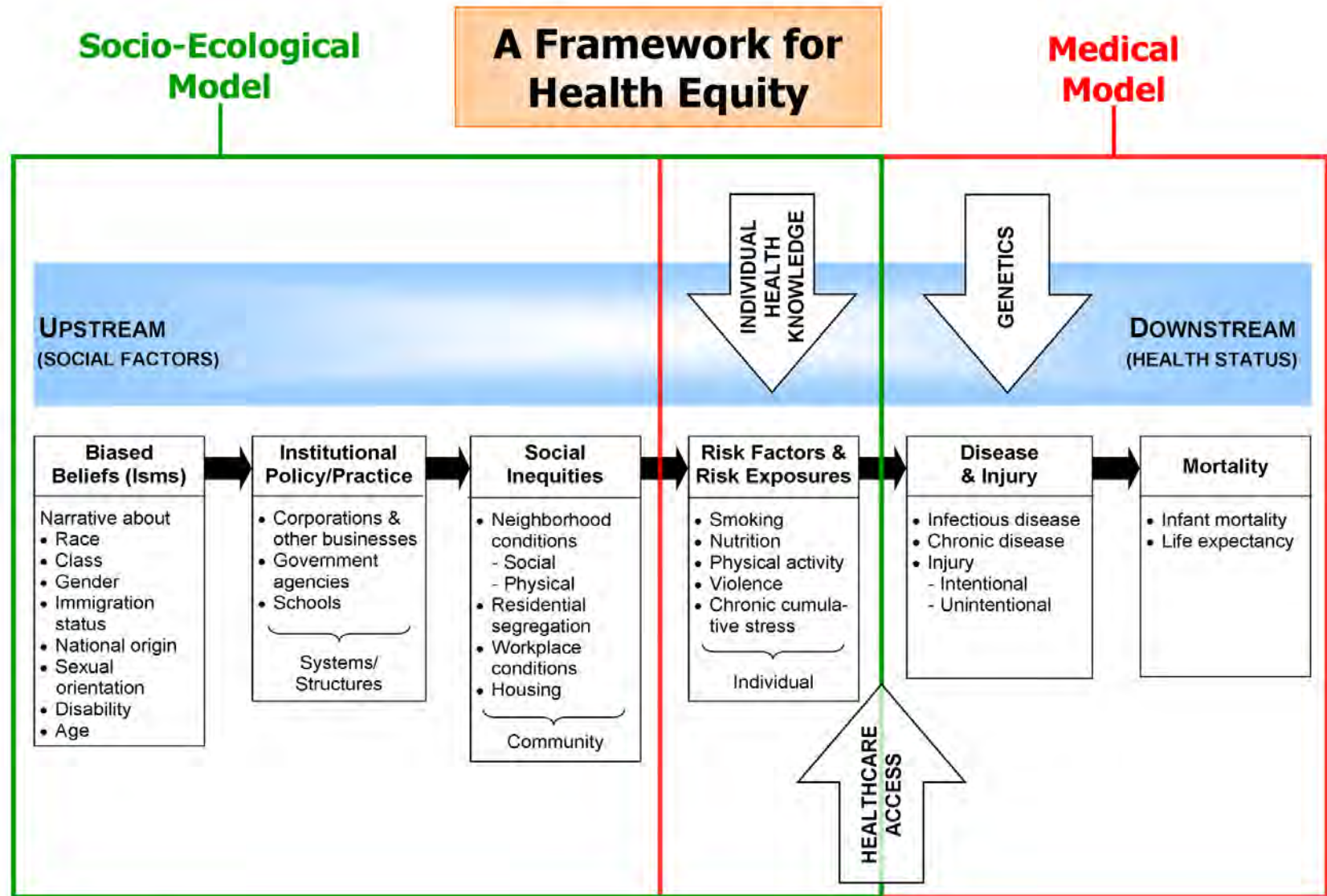
# Mandated and Discretionary Services

HCSA Department	Mandated Services	Discretionary Services
<b>Indigent, Cross-Jurisdictional, and Emergency Health</b>	Indigent Health, Medical Services to Youth in Custody, Emergency Medical Services	School Health Services, Children’s Policy, Court Appointed Special Advocates, Youth Centers, Children’s Dental, Health Insurance Enrollment, MAA/TCM, Health Care for Low Income Uninsured, Health Care for the Homeless
<b>Behavioral Health</b>	Alcohol and Other Drug Services, Mental Health Services, Medi-Cal Consolidation	Housing Support for Homeless, Vocational Training, Self-Help and Empowerment, Crisis Support for the Uninsured
<b>Environmental Health</b>	Food/Water/Recreational Safety, Hazardous Materials/Waste Mgmt, Vector Control, Land Use/Septic, Solid/Medical Waste, Body Arts, Epidemiological Investigations, Complaints	Green Business/Community Environmental Health Services, Healthy Nail Salons, Pharmaceutical Safe Take Back, Food Facilities Grading System

# Mandated and Discretionary Services

HCSA Department	Mandated Services	Discretionary Services
<b>Public Health</b>	Health Officer, Public Health Nursing, Public Health Laboratory, Public Health Statistics, Health Education, Communicable Disease Control & Surveillance, Disability Prevention, Child Health, Nutrition Services, Diabetes Prevention, Foster Care Health, Maternal & Infant Health, Dental Health, Tobacco Control	Asthma Program, Developmental Disabilities Planning & Advisory, Pregnancy Prevention, Teen Dating Violence Prevention, Home Visiting & Family Support System, Social & Health Equity Programs

# EVOLVING DEFINITIONS OF HEALTH CARE



# BASIC COMPONENTS OF A HEALTH CARE DELIVERY SYSTEM

- **Public Health (including health promotion and disease prevention)**
- **Emergency Medical Services (911 and ambulances)**
- **Ambulatory Care (primary and specialty)**
- **Behavioral Health Services (in-patient and ambulatory)**
- **Dental Services**
- **Acute Care Hospitals**
- **Long-term Care (either in-home or institutional care)\***
- **Rehabilitation Services**
- **Pharmacy, medical devices and equipment**

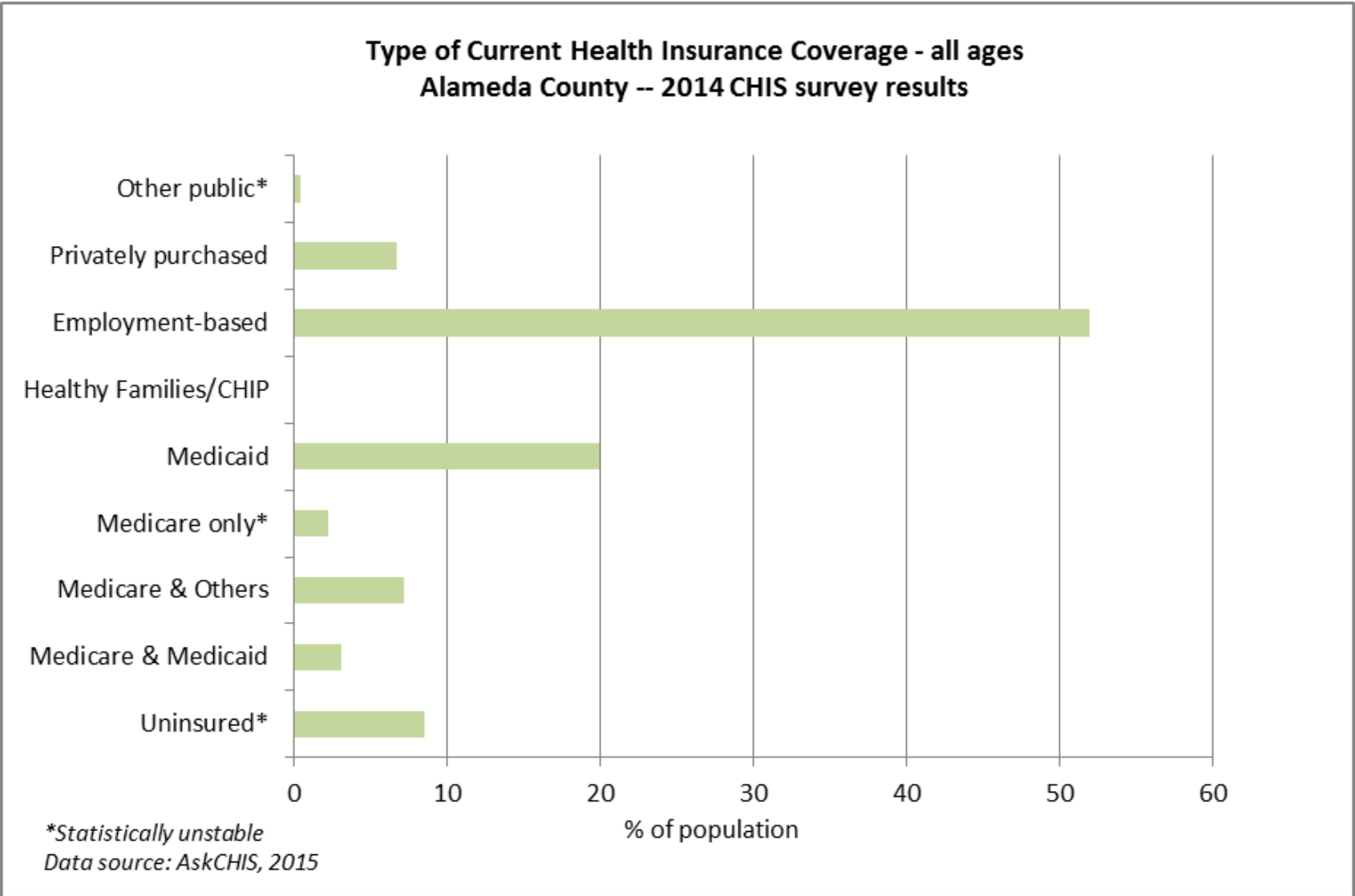
\*Not covered as a safety net service



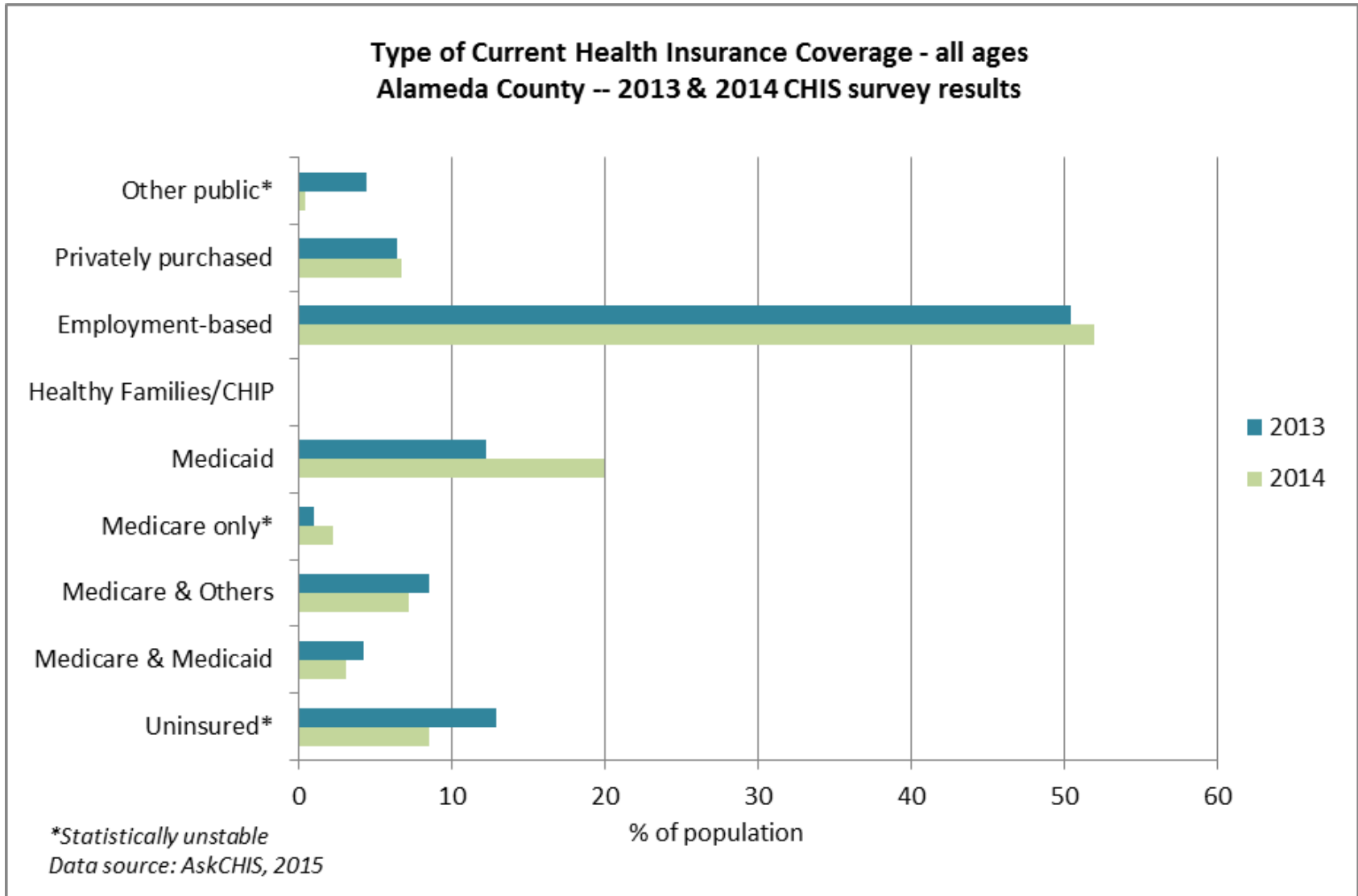
# SOURCES OF HEALTH DATA

- **Health insurance breakdown information from California Health Interview Survey (CHIS):**
  - 2015 updates coming in late October
- **Hospital Utilization Data from OSHPD (Office of Statewide Health Planning and Development):**
  - 2015 updates coming in mid-September

# WHAT IS THE PAYER MIX IN ALAMEDA?



# WHAT IS THE PAYER MIX IN ALAMEDA COUNTY? 2013 VS 2014



# HEALTH CARE SYSTEM IN ALAMEDA COUNTY MAJOR PROVIDERS

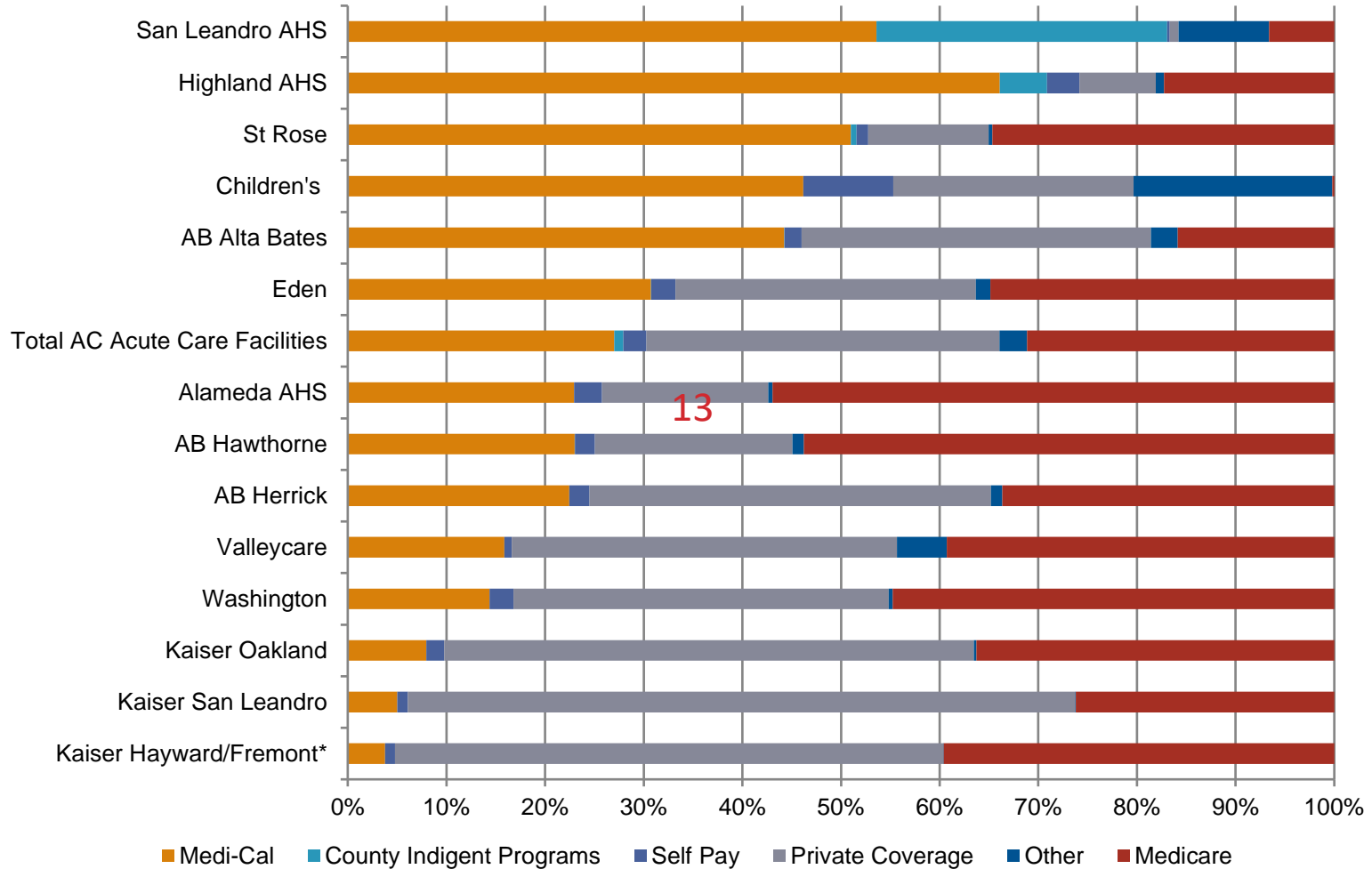
## Hospitals and Hospital Systems

- Kaiser
- Sutter Health
  - Sutter Health East Bay
  - Eden
- Alameda Health System
- ValleyCare Hospital
- Washington Hospital
- St Rose Hospital
- Fremont Hospital
- UCSF Benioff Children's Hospital

## Large Medical Groups

- Sutter Health
- Hill Physicians
- Stanford
- Children First Medical Group
- Community Health Center Network (CHCN)
- VA Outpatient

# INPATIENT VISIT PAYER SOURCE: ALAMEDA COUNTY ACUTE CARE FACILITIES, 2014



\*Data is incomplete for Kaiser Hayward/Fremont, which is included in Kaiser Facilities (½ year of data available only, so multiplied by 2 to estimate full year)

Source: OSHPD, 2014: <http://report.oshpd.ca.gov/>

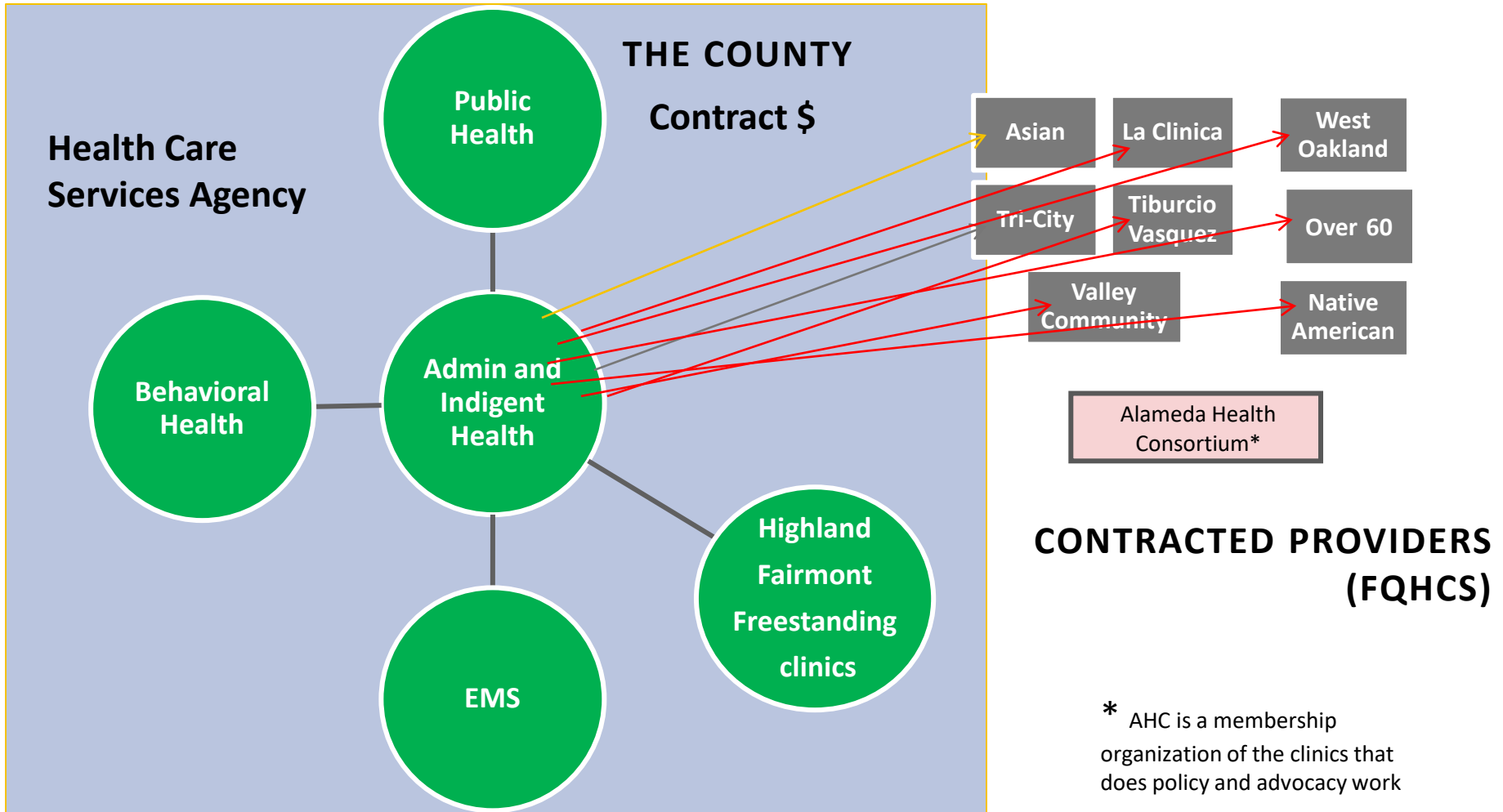
# WHAT ARE SAFETY NET SERVICES?

## SERVICES FOR MEDICAL AND UNINSURED

- **Public Health (including health promotion and disease prevention)**
- **Emergency Medical Services (911 and ambulances)**
- **Ambulatory Care (primary and specialty)**
- **Behavioral Health Services (in-patient and ambulatory)**
- **Dental Services**
- **Acute Care Hospitals**
- **Rehabilitation Services**
- **Pharmacy, medical devices and equipment**

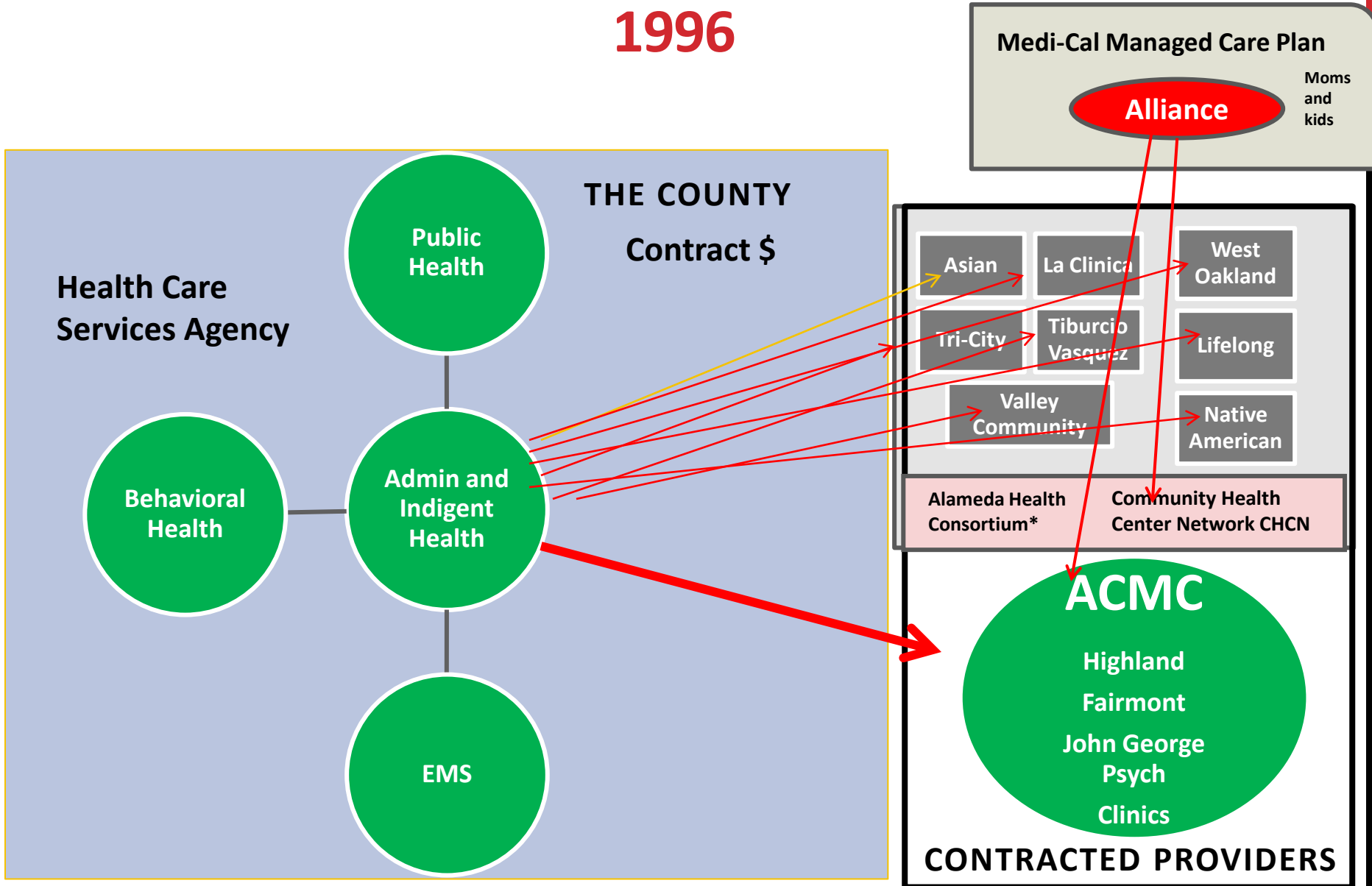
# ALAMEDA COUNTY SAFETY NET RELATIONSHIPS

## 1980



# ALAMEDA COUNTY SAFETY NET RELATIONSHIPS

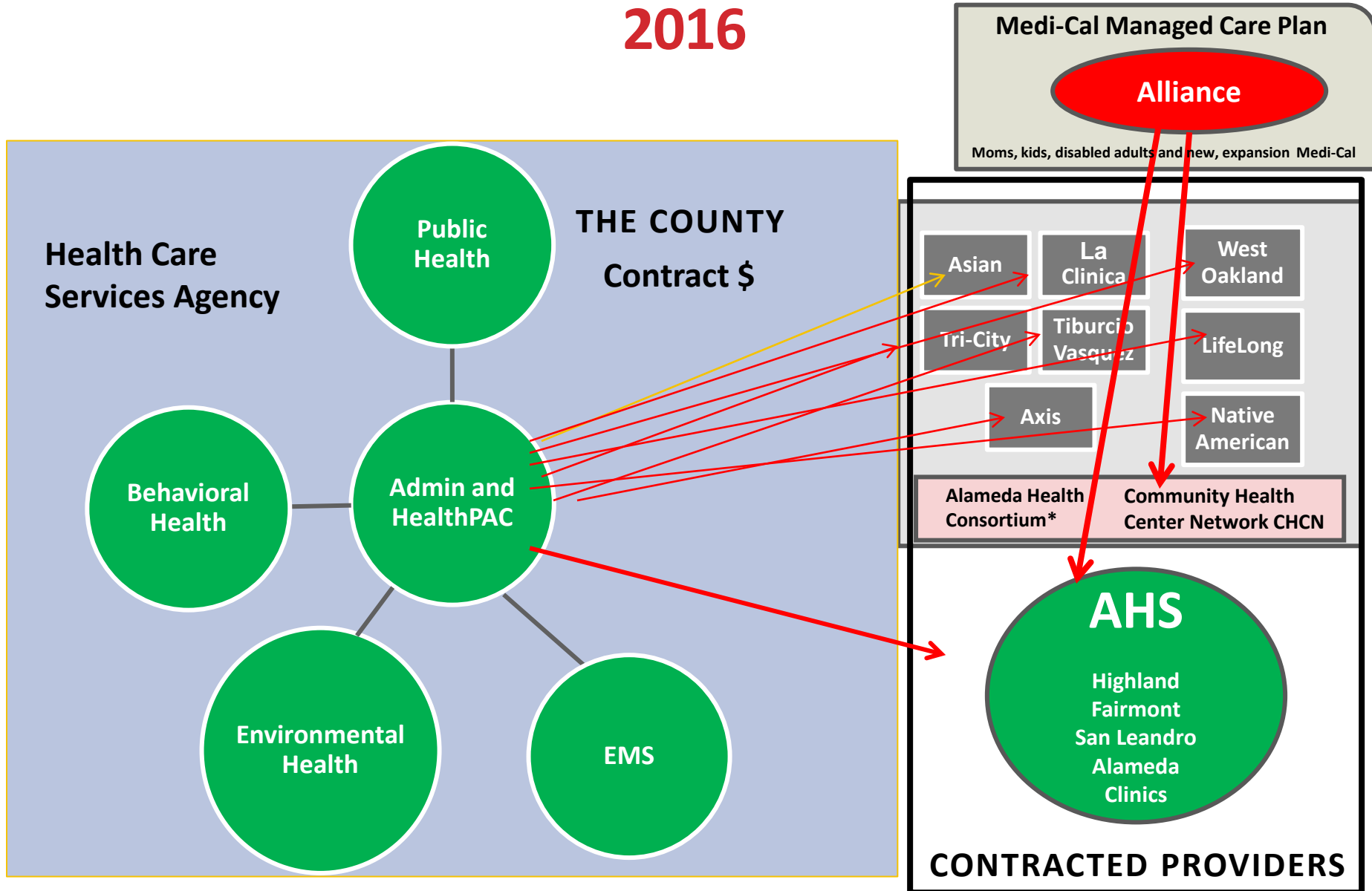
1996





# ALAMEDA COUNTY SAFETY NET RELATIONSHIPS

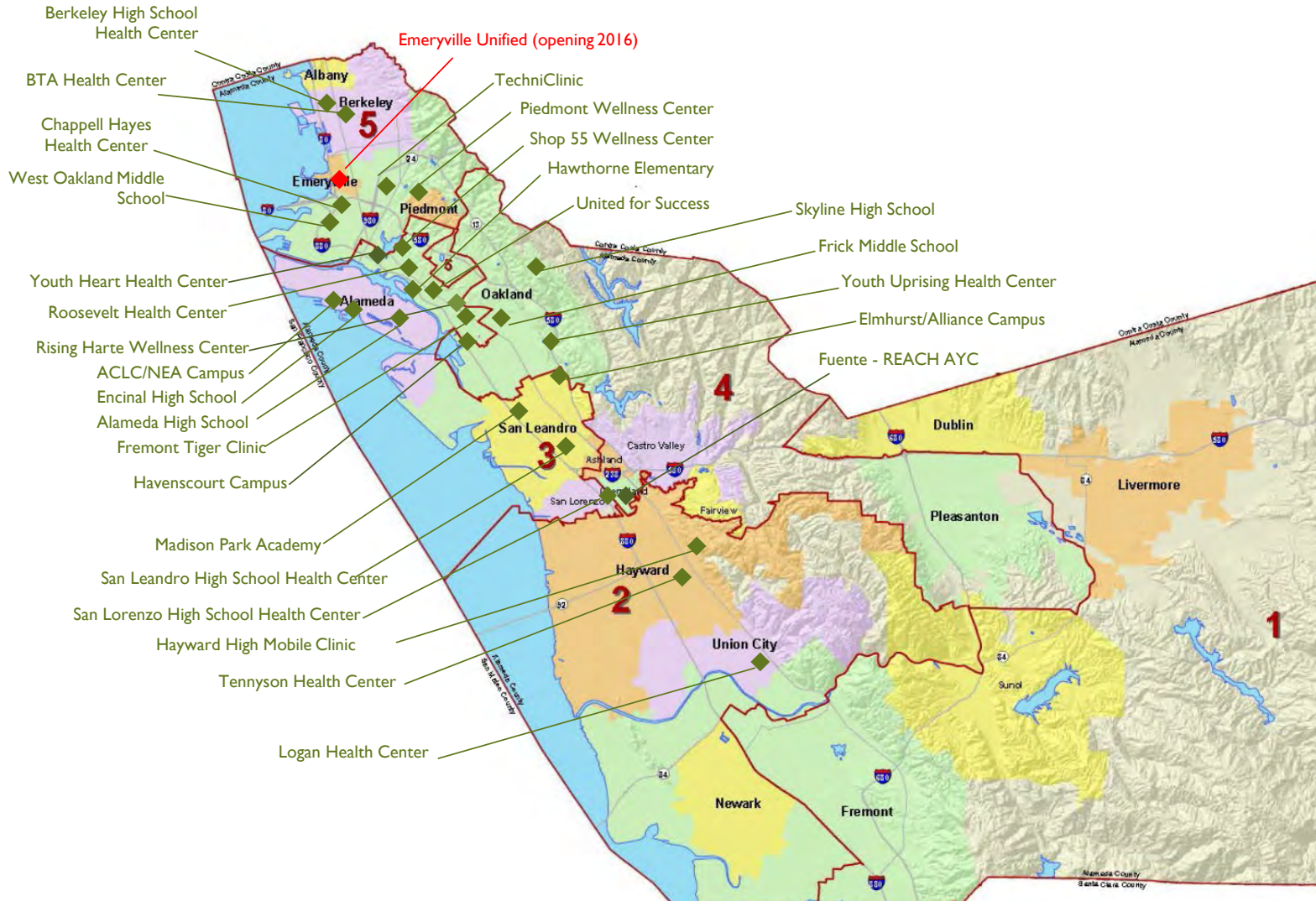
## 2016





# ◆28 Current School Health Centers (SHCs)

## ◆1 New School Health Centers



LINKING HEALTH AND EDUCATION TO CHANGE LIVES AND ACHIEVE EQUITY

10 00 SAN LEANDRO BOULEVARD SUITE 300 | SAN LEANDRO, CA 94 577 | WWW.ACHEALTHYSCHOOLS.ORG

# MEDI-CAL AND THE REMAINING UNINSURED

## Alameda County 2016

Medi-Cal in managed care (as of 8/1/16)	316,518
Medi-Cal fee for services (estimate)	79,000
Undocumented Children Eligible for Medi-Cal	<u>8,000</u>
<b>Medi-Cal Total</b>	<b>403,518</b>
<b>Uninsured:</b>	
• Not Eligible due to Immigration Status	65,000
• Eligible for Medi-Cal	< 5,000
• Eligible for Subsidies through Covered CA	< 5,000
• Non-subsidy Eligible Citizens & Lawfully Present Immigrants	17,000
<b>Total Uninsured</b>	<b><u>84,000</u></b>
<b>Total Safety Net population</b>	<b>approximately 487,518</b>

*Uninsured data source: Preliminary CalSIM v 2.0 Regional Remaining Uninsured Projections  
August 2016*

# **EFFORTS TO MEET DEMAND**

## **Planning for Additional Senior Services**

**Focus on prevention and social determinants of health such as:**

- **Housing**
- **Nutrition**
- **Exercise**

## **Special Services for Frequent Utilizer Groups**

- **Health homes via the managed care plans**
- **Whole person care**

# HEALTH CARE CHALLENGES

- **Aging Population**
- **Cost of Health Insurance**
- **Low Medi-cal Reimbursements**
- **Pent up Demand for Health Care Services**
- **Hospital Closures**

- **Integrating Mental Health and Substance Abuse Treatment into Primary Care**
- **Transition to Electronic Health Records**
- **Availability of and Access to Primary Care**

**QUESTIONS?**